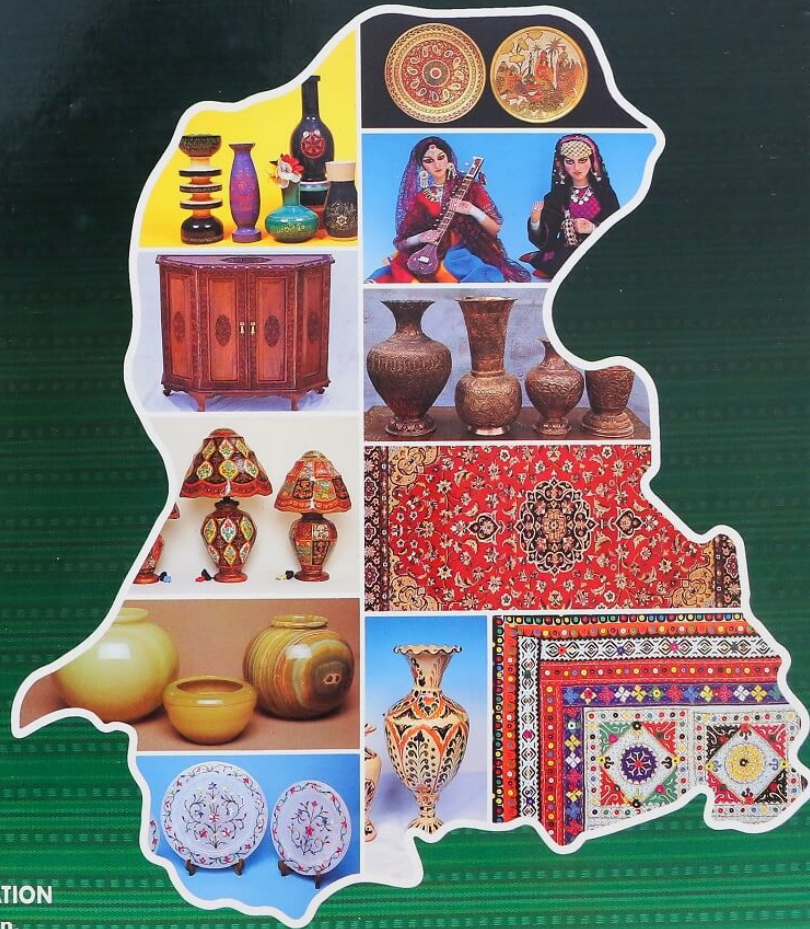


# INDUS VALLEY CRAFTS OF PAKISTAN



SINDH SMALL INDUSTRIES CORPORATION  
Government of Sindh - Pakistan.



# INDUS VALLEY CRAFTS OF PAKISTAN

## BUSINESS CONTACT:

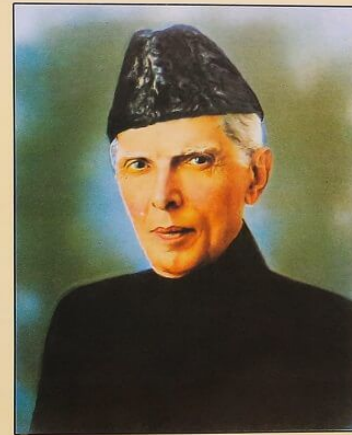
Traditional Handicrafts and Carpets representing centuries old cultural heritage of Pakistan are available at PAKISTAN HANDICRAFT SHOPS Located at the following places of.

Sindh Small Industries Corporation,  
Government of Sindh

1. DIRECTORATE OF MARKETING  
A. M. 310, PREEDY STREET,  
SADAR, KARACHI, PAKISTAN.  
TEL : 092-021-99215582  
FAX : 092-021-99215584  
E-MAIL : ssicgos.1972@yahoo.com  
WEB SITE : www.ssic.gos.pk
2. Pakistan Handicraft Shop  
PIDC House, Dr. Ziauddin Ahmed Road,  
Karachi, Pakistan.  
Tel : 092-021-99204380  
Fax : 092-021-99206691  
E-mail : ssicgos.1972@yahoo.com  
Web site : www.ssic.gos.pk
3. Pakistan Handicraft Shop  
International Departure/Transit Area,  
Quaid-e-Azam International Airport Karachi.
4. Pakistan Handicraft Shop  
Moenjodaro Larkana Sindh
5. Handicrafts Development Centre  
Kashmore, Sindh.







QUAID-E-AZAM  
MUHAMMAD ALI JINNAH  
(1876 - 1948)  
Founder of Pakistan

# MAP OF PAKISTAN





## CONTENTS

S. No.	PRODUCTS	Page No.
A-1.	ROCK SALT LAMPS	1
1.	TEXTILE CRAFTS	1
2.	MIRROR WORK	27
3.	STRAW BASKETRY	29
4.	GLAZED POTTERY	33
5.	KASHMIRI EMBROIDERY	41
6.	TRADITIONAL FLOOR COVERINGS	45
7.	ONYX CRAFTS	55
8.	CAMEL SKIN CRAFTS	83
9.	METAL CRAFTS	89
10.	COSTUME JEWELLERY	125
11.	LEATHER GOODS AND FOOTWEAR	141
12.	COSTUME DOLLS	151
13.	WOOD CRAFTS	155
14.	CAMEL BONE CRAFTS	179

## ROCK SALT LAMPS

Salt is nature's one of the most wonderful gift having over 14000 known uses. Rock salt originated about 256 million years ago. It's mines in Pakistan are amongst one of the two biggest and oldest salt ranges in the world. Some sources claim that the rock salt was formed here even before Pre-Cambrian era.

Salt is natural ionizer, as such the Rock Salt Lamps are known to effectively improve the quality of air by producing Negative Ions (the vitamins of the air). Use of these lamps also offsets the effects of Positive. Ions produced by the modern day's products and equipment.

Although not being a medical device, the Salt Crystal Lamps are known to help alleviate fatigue, stress, asthma attacks, allergies, skin disorders, air moisture, odour and also induce comfortable sleep. The wide range of soothing colours of the lamps help patients with blood pressure, emotional/psychological disorders.

Use of these carefully handcrafted salt crystal lamps in daily life has enormous health benefits at a very low cost. They are and ideally suited for use at home, office and all such places where fresh and healthy air is required.



RSL-1 Rock Salt Lamp Mini with Rose Wood Base  
RSL-2 Rock Salt Lamp Mini with Rose Wood Base  
RSL-3 Rock Salt Lamp Mini with Rose Wood Base  
RSL-4 Rock Salt Lamp Mini with Rose Wood Base  
RSL-5 Rock Salt Lamp Mini with Rose Wood Base  
RSL-6 Rock Salt Lamp Mini with Rose Wood Base  
RSL-7 Rock Salt Lamp Mini with Rose Wood Base  
RSL-8 Rock Salt Lamp Mini with Rose Wood Base  
RSL-9 Rock Salt Lamp Mini with Rose Wood Base  
RSL-10 Rock Salt Lamp Mini with Rose Wood Base  
RSL-11 Salt Gold Lamp with Rose Wood Base  
RSL-12 Salt Lamp Duck Shape  
RSL-13 Salt Lamp Natural Shape with Rose Wood Base



SSIC

## TEXTILE CRAFTS

RALLY, AJRAK, BLOCK PRINTED ARTICLES, SILK COTTON AND ZARI THREAD EMBROIDERY, MIRROR WORK EMBROIDERY, HAND WOVEN FABRICS AND KHES (BED SPREADS)

Textile crafts is one of the major sub sector of Pakistan handicrafts covering hand woven fabrics and Khes (bed spreads) patch work Rally (bed spread) Ajrak printing process, hand block printing and silk, cotton, Zari thread embroidery and exquisite mirror work embroidery.

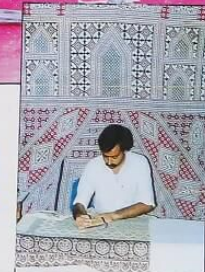
A wide range of tradition soaked articles, namely patch work rallies, hand woven sussi fabrics and Khes, Block Printed Ajraks and Bed spreads, Table covers, Embroidered tea cosies, Cushion covers, Caps and Coaties, Shawls and dresses etc. are produced faithful to the tastes and trends in currency.

The range of designs employed onto these articles is enormous and the media of weaving, printing, embroidery and applique numerous.

Patch work or applique work rally (Bed spread) is a popular rural craft of Sindh. Carefully cut pieces of cloth in desired shape are hand stitched on the base material in a geometrically arranged pattern merging the skill of crafter with spirit of tradition.

Ajrak is a technique of wooden block printing on cotton texture with a mixture of vegetable dyes involving some sixteen processes. Articles produced with this technique make a traditional symbol of respect in cultural linkage of Sindh. Both the floral and geometrical patterns are employed in Ajraks.

Hand Woven sussi fabrics and Khes (Bed spread)



SSIC



are also traditional rural craft of Sindh. Sussi is the traditionally given name to a hand woven cotton or silk fabric in striped pattern and khes is hand woven bed spread employing intricate geometrical patterns in weave. Khes are produced both in cotton and silk sometime using golden or silver metallic threads also to give a bright look to the texture.

Sindh has distinct folk tradition in embroidery employing interlace stitches with silk, cotton or metallic threads. Sindh is also the home of mirror embroidery with its myriad reflection of light on bright coloured base materials. Circular pieces of looking glass are held together by the bottom hole stitches in the formal or exotic geometrical arrangement.

Bold lines and bright colours are striking feature of rural embroidery. Entire back ground is ornamented with thread and mirror work. Costumes embroidered with such ornamentation become symbol of traditional and cultural festivity. Mirror embroidery is used widely on dresses, caps, table covers, cushion covers and runners.

Intermingled scrolls done with gold or silver metallic string on velvet base material is a tradition of northern region of Pakistan. Circular pieces of looking glass are also used within patterned scrolls of the metallic cord to produce a vivid contrast on the dark coloured velveteen material. Coaties, caps and cushion covers produced through this technique of embroidery are popular for festive occasions.

Hand woven colourful silk textures ornamented with gold and silver metallic threads depicting traditional motifs and patterns make valued brocades, sarees and stoles for ladies wear and are taken in high esteem in national and cultural theme of Pakistan.



SSIC



Cotton Raly (Patch Work Bed Spread) 4 1/2 X 6 1/2

SSIC









SSIC



SSIC



7





Cotton Ajrak Hand Block Printed 70" X 90" Cotton Ajrak Hand Block Printed 70" X 90" Cotton Ajrak Hand Block Printed 70" X 90"



Cotton Table Cloth Black and White Print 60" X 90"

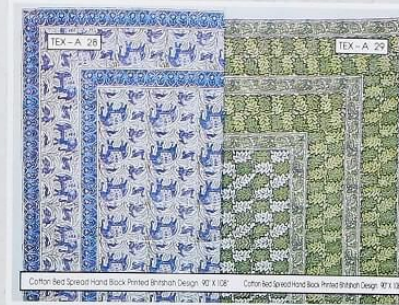


Cotton Ajrak Hand Block Printed 70" X 90" Linen Ajrak Mirror work Hand Block Printed 40" X 75"



Cotton Ajrak Table Cloth Hand Block Printed 60" X 90" Cotton Ajrak Table Cloth Hand Block Printed 60" X 90"

SSIC



Cotton Bed Spread Hand Block Printed Bhinab Design 90" X 108" Cotton Bed Spread Hand Block Printed Bhinab Design 90" X 108"



Silk Khes (Bed Spread) Hand Woven 65" X 90" Silk Khes (Bed Spread) Hand Woven 65" X 90"

SSIC



30. Cotton Bed Spread Hand Block Printed Bhinab Design 90" X 108" 31. Cotton Bed Spread Hand Block Printed Bhinab Design 90" X 108" 32. Cotton Bed Spread Hand Block Printed Bhinab Design 90" X 108" 33. Cotton Bed Spread Hand Block Printed Bhinab Design 90" X 108" 34. Silk Khes Hand Woven Shawl (Long) 20" X 80" 35. Cotton Hand Woven Shawl (Long) 24" X 80" 36. Cotton Hand Woven Shawl (Long) 24" X 80" 37. Linen Bath Print Shawl 40" X 80"

9





TEX-A 38



- 38. Traditional Wedding dress  
Silk thread Embroidered with Mirror work
- 39. Old Embroidered runner with  
Mirror work 5' X 30"
- 40. Sindhi Traditional Dress  
Front Embroidered with Zari thread
- 41. Sindhi Traditional Dress  
Front Embroidered with Zari thread
- 42. Traditional Wedding dress with Mirror work

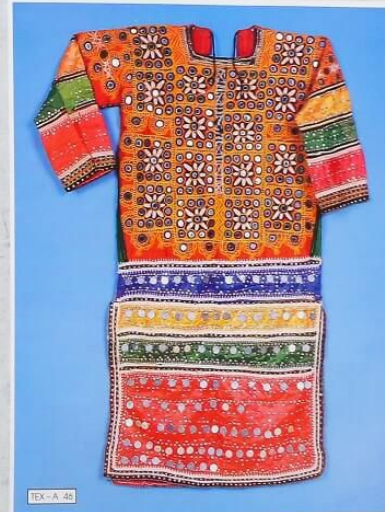
SSIC



TEX-A 43

TEX-A 44

TEX-A 45



TEX-A 46

- 43. Sindhi Traditional Dress Front Embroidered with Mirror work
- 44. Sindhi Traditional Dress Front Embroidered with Mirror work
- 45. Sindhi Traditional wedding Dress Embroidered
- 46. Sindhi Traditional wedding Embroidered

SSIC



- 61. Baluchi Coat Embroidered with Mirror work
- 62. Baluchi Coat Embroidered with Mirror work
- 63. Sindhi Traditional cap Embroidered.
- 64. Sindhi Traditional cap Embroidered.
- 65. Sindhi Traditional cap Embroidered.
- 66. Sindhi Traditional cap Embroidered.
- 67. Sindhi Traditional cap Embroidered.
- 68. Sindhi Traditional cap Embroidered.
- 69. Sindhi Traditional cap Embroidered.
- 70. Sindhi Traditional cap Embroidered.
- 71. Sindhi Traditional cap Embroidered.



- 72. Sindhi Traditional Runner Embroidered with Mirror work. 5' X 35'
- 73. Sindhi Cushion cover Embroidered with Mirror work. 16' X 16'
- 74. Sindhi Cushion cover Embroidered with Mirror work. 20' X 20'
- 75. Baluchi Traditional Dress Embroidered with Mirror work. (Shalwar Kameez)







TEX-A 76

76. Baluchi Traditional Dress Embroidered with Mirror work. (Shalwar, Kameez)



TEX-A 77

77. Baluchi Traditional Dress Embroidered with Mirror work. (Shalwar, Kameez)



TEX-A 78

(a)

(b)

(c)

(d)

(e)

(f)



TEX-A 80

78. (a, b, c, d, e, f) Baluchi Cushion Cover Embroidered with Mirror work Round.

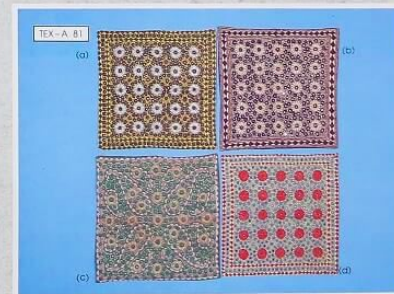
79. (a, b, c, d, e, f) Baluchi Cushion Cover Embroidered with Mirror work Square.

80. Velvet Coat Embroidered with Zari Cord and Mirror work.

81. (a, b, c, d) Sindh Cushion Cover Embroidered with Mirror work 15'x 15' Square.



TEX-A 79



TEX-A 81

(a)

(b)

(c)

(d)



86. Velvet bag Zari and Mirror work.  
87. Velvet Cushion cover Zari work Round.  
88. Velvet Cushion cover Zari work in different colours.  
89. Velvet Cushion cover Zari and Mirror work.  
90. Silken Quilted cushion cover Embroidered.  
91. Velvet Cushion cover Zari and Mirror work square.  
92. (a) Tea Cosy Embroidered.  
92. (b) Velvet Tea Cosy Zari and Mirror work.  
92. (c) Velvet Tea Cosy Zari and Mirror work.  
92. (d) Velvet Cushion cover Embroidered Round.





TEX-A-93



TEX-A-97

TEX-A-98

TEX-A-99

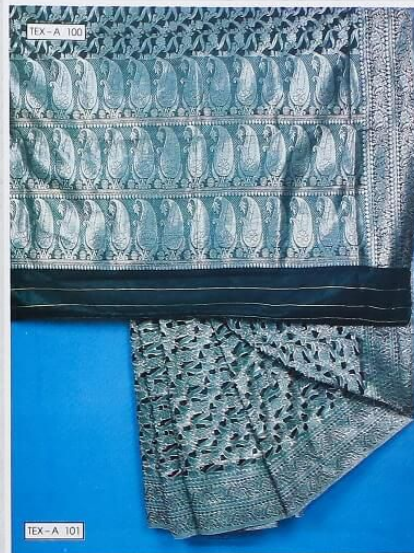


TEX-A-94

TEX-A-95

TEX-A-96

93. (a) Velvet Cushion cover Embroidered Zari and Mirror work Round.  
 93. (b) Velvet Cushion cover Embroidered Zari and Mirror work Round.  
 93. (c) Velvet Cushion cover Embroidered Zari and Mirror work Round.  
 93. (d) Velvet Cushion cover Embroidered Zari and Mirror work Round.  
 94. Velvet Trolley set Embroidered Zari and Mirror work.  
 95. Velvet Purse Embroidered Zari and Mirror work.  
 96. Velvet Tea Cosy Embroidered Zari and Beads work.  
 97. Velvet baby suit Embroidered Zari and Mirror work.  
 98. Velvet Coat Embroidered Zari and Mirror work.  
 99. Velvet Cap Embroidered.



TEX-A-100

TEX-A-101

100. Silk Saree with Blouse.  
 101. Silk Saree with Blouse Zari work.  
 102. Silk Saree with Blouse Zari work.



TEX-A-102





103. Silk Saree with Blouse Zari work.

104. (a) Silk Saree with Blouse Zari Work.  
(b) Silk Saree with Blouse Zari Work.



SSIC



105. (a) Silk Saree with Blouse Zari work.  
(b) Silk Saree with Blouse Zari work.

106. Silk Saree Zari work.  
107. Silk Saree Zari work with Blouse.

108. (a) Silk Stole Gold thread work. 18"x80"  
(b) Silk Stole Gold thread work. 18"x80"  
(c) Silk Scarf Zari work. 45"x45"

SSIC

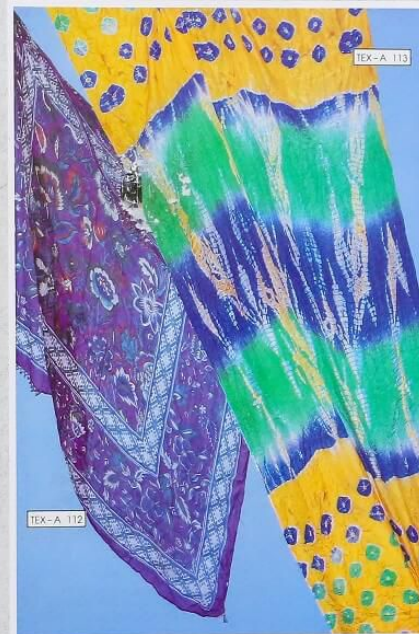


23





109. (a) Silk Surt 2 Pc. (Shirt & Dupatta) 5 Yards  
 (b) Silk Surt 2 Pc. (Shawl & Kameez) 5 Yards  
 (c) Silk Surt 2 Pc. (Kameez & Dupatta) 5 Yards  
 (d) Silk Surt 2 Pc. (Kameez & Shawl) 5 Yards  
 (e) Silk Surt 2 Pc. (Kameez & Shawl) 5 Yards  
 110. (a) Silk Surt 2 Pc. (Shirt & Dupatta) 5 Yards  
 (b) Silk Surt 2 Pc. (Shirt & Dupatta) 5 Yards  
 (c) Silk Surt 2 Pc. (Shirt & Dupatta) 5 Yards  
 111. (a) Silk Surt 2 Pc. (Shirt & Dupatta) 5 Yards  
 (b) Silk Surt 2 Pc. (Shirt & Dupatta) 5 Yards  
 (c) Silk Surt 2 Pc. (Shirt & Dupatta) 5 Yards



112. Silken Scarf printed size 40" X 40"  
 113. Silken Dupatta multi colour.  
 114. Cotton Chundai Coloured (Scarf).  
 115. Cotton Chundai Coloured (Scarf).





116. Sindh traditional Ghagra mirror work (Sket)  
117. Sindh traditional Ghagra mirror work (Sket)  
118. Velvet Shopping Bag zari work  
119. Sindh Shoulder Bag mirror work  
120. Velvet Shoulder Bag mirror work  
121. Sindh Shoulder Bag mirror work

SSIC

## MIRROR WORK

Fascinated by the artistry of mirror work on the walls and ceiling in certain historical buildings and monuments, some ingenious craftsmen innovated the tedious but exquisite technique of setting multi-coloured tiny beads and glass pieces on to the wooden base shellac quoted objects. Articles produced with this technique and masterly skill include animal figures, cigarette Boxes, pencil jars, key chains, ball point pencils etc. These articles are in fancy and fashion and have flexibility of being fit into modern tastes and trends of contemporary way of life.



SSIC

27



1. Mirror Work Horse size 6"
2. Mirror Work Elephant size 4"
3. Mirror Work Ashtray size 4"
4. Mirror Work Elephant size 3"
5. Mirror Work Ball Pens
6. Mirror Work Pencil Jar size 4"
7. Mirror Work Cigarette Box size 5"
8. Mirror Work Donkey size 5"
9. Mirror Work Vase size 6"
10. Mirror Work Camel size 3"
11. Mirror Work Fish Ashtray size 4"
12. Mirror Work Elephant size 5"



28

SSIC

## STRAW BASKETRY

The golden straw has for many many years helped to rear the art of weaving decorative basketry. This natural material being capable of artistry has become an integral part of the needs of village folk.

Employing masterly skill and conforming happily to the theme of regional traditions, the straw weaver weaves the patterns of many a functional and decoration articles like trays, plates, low rim baskets in round and oval shapes, bread baskets with high rim and cover lid, conventional hand fans, hand bags, and folk toys.

Gold and silver metallic thread tinsels gracefully blended with coloured cotton-silk threads are used to ornate the straw crafts in subtle motifs and layout and the intricate lattice decorative patterns and designs add eye catching attraction to the articles.



SSIC

29





1. Straw Tray thread work round for bread.
2. Straw Hand Fan with thread work.
3. Straw Tray oval for bread.
4. Straw Basket round with cover.
5. Straw Tray round.

SSIC



6. Kunder Basket with lid.
7. Kunder Mat round.
8. Kunder Basket with handle.
9. Kunder Mat small.
10. Kunder Basket round.
11. Kunder Mat small round.
12. Straw Tray with cover for bread.
13. Straw Tray Oval for bread.
14. Straw Tray Oval for bread.

SSIC



31





ST-C-15

ST-C-16

ST-C-17

15. Straw Bar Chui for sweeping of rice and wheat.
  16. Straw Bar Basket with thread work.
  17. Straw Bar Chui for sweeping of rice and wheat.
- T-D-1
1. Sindhi Traditional Hand Fan with thread and mirror work.



T-D-1

32

SSIC

## GLAZED POTTERY

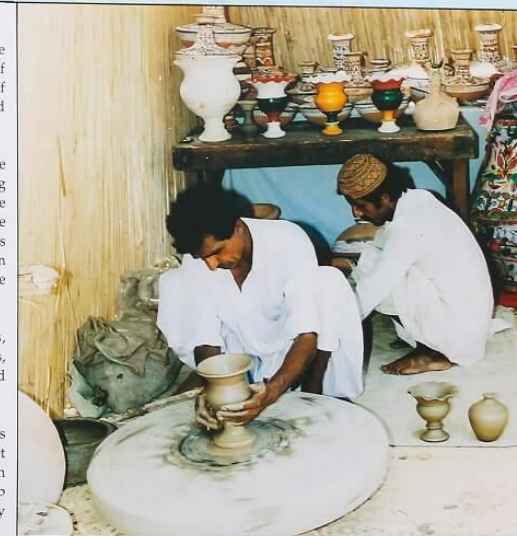
The Glazed Pottery of Sindh has tradition quite its own and portrays influence and symbols of Indus Valley Civilization of 3500 B.C. The theme of culture has also been preserved in the glazed pottery.

The Potter with age old skill turns out a wide range of functional and decorative articles including toys for children's play and joy. The forms of the articles are elegant, bold and balanced and the designs floral or geometrical and the glazes reflecting colours and shades of white, blue, golden yellow, crimson and cinnamon Brown and some times green too.

The Range of Pottery Crafts Covers, Vases, Flowers Pots, Plates, Trays, Dishes, Bowls, Tea Sets, Water Sets, Wall Hangings, Animal Figures and Folk Toys etc.

Hand Painted Blue and White Pottery reflects soft and subtle combination of traditional folk art and floral theme of designs transformed on utilitative articles like Vases, Jars, Planters, Lamp bases etc. by master craftsmen possessing hereditary skill.

Famous with name of Blue Pottery, it has attained prestigious place in handicrafts sector through esteemed patronage of lovers of art and innovation of craftsmen.



SSIC

33





14. M/P Tea Mug.  
15. M/P Sugar Pot.  
16. M/P Tea Mug.  
17. M/P Jug small.  
18. M/P Jug large.  
19. M/P Table Lamp without shade.  
20. M/P Table Lamp.  
21. M/P Table Lamp / Surahi.



22. M/P Table set.  
23. M/P Flower Vase.  
24. M/P Flower Vase.  
25. M/P Flower Vase.  
26. M/P Flower Vase.  
27. M/P Table Lamp.  
28. M/P Table Lamp.  
29. M/P Table Lamp.

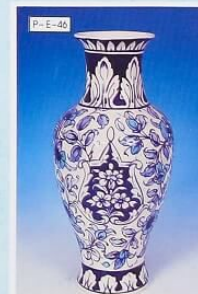




30. M/P Flower Vase.  
31. M/P Flower Vase.  
32. M/P Flower Vase.  
33. M/P Flower Vase.  
34. M/P Flower Vase.  
35. M/P Table Lamp.  
36. M/P Table Lamp.  
37. M/P Table Lamp.  
38. M/P Flower Pot Small.  
39. M/P Flower Pot Large.  
40. M/P Flower Pot Medium size.



41. M/P Tea Set.  
42. M/P Flower Pot with Handle.  
43. M/P Ashtray.  
44. M/P Ashtray.  
45. M/P Ashtray.  
46. M/P Flower Vase Large.  
47. M/P Lamp.

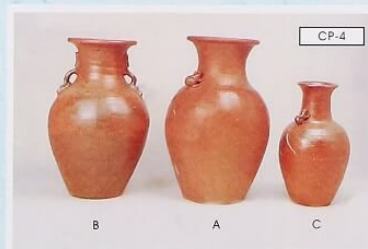






48. M/P Surahi Flower Vase. 51. M/P Flower Vase.  
49. M/P Fruit Bowl. 52. M/P Planter (Garnig).  
50. M/P Flower Vase.

SSIC

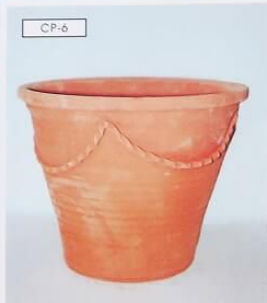
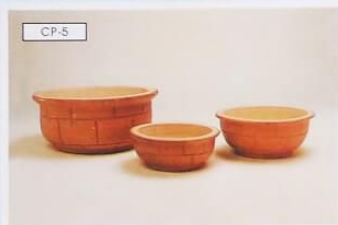


CP-1 Clay Pottery Planter Set of 4 pcs.  
CP-2 Clay Pottery Planter Set of 4 pcs.  
CP-3 Clay Pottery Planter Set of 5 pcs.  
CP-4 Clay Pottery Flower vass  
A (Large) B (Medium) C (Small)

SSIC

40-A





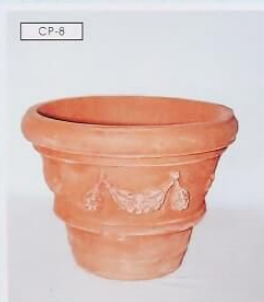
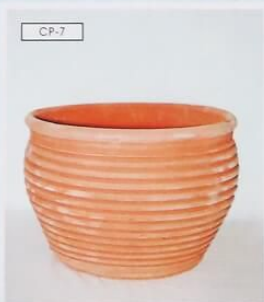
CP-5 Clay Pottery Bowl Set of 3 pcs.

CP-6 Clay Pottery Planter

CP-7 Clay Pottery Planter in round Shape

CP-8 Clay Pottery Planter

CP-9 Clay Pottery Planter



## KASHMIRI EMBROIDERY

The Kashmiri Embroidery commonly known with its traditional name "Kashida Embroidery" is famous for its sheer beauty and has in perfection attained the limits of fantasy and incredulity.

Patterns and colour schemes are magnificently employed in Kashmiri Embroidery by the crafts-man with a mood aligned to the spirit of nature.

Kashmiri Embroidery is done on woollen base material with bright colour silken threads. Soft pastel colours of silken threads are also used in Kashmiri Embroidery. And the designs and motifs employed are mostly natural depicting Flowers and Leaf, Birds, Blossoms and Trees. Channar leaf is one of the popular motifs in Kashmiri Embroidery.

Utility items being produced commercially today are Shawls, Stoles, Scarves, Coats, Coaties and Dress pieces.







WS-F-1



WS-F-3



WS-F-2



WS-F-5

- |                                    |                                    |
|------------------------------------|------------------------------------|
| 1. Woolen Kashmiri Shawl 36" X 80" | 4. Woolen Kashmiri Shawl 30" X 72" |
| 2. Woolen Kashmiri Shawl 36" X 80" | 5. Woolen Kashmiri Shawl           |
| 3. Woolen Kashmiri Shawl 30" X 72" | Full Work 40" X 80"                |

SSIC



WS-F-6

WS-F-7

- |                                    |
|------------------------------------|
| 6. Woolen Kashmiri Shawl 30" X 72" |
| 7. Woolen Kashmiri Shawl 30" X 72" |
| 8. Woolen Kashmiri Shawl 36" X 80" |
| 9. Woolen Kashmiri Shawl 30" X 72" |

SSIC



WS-F-8

WS-F-9

43





WS-F-10



WS-F-11

10. (1, 2, 3) Woolen Shawl Kashmiri Work size 36" X 80"  
(Hand Embroidered)
11. (1, 2, 3, 4) Woolen Shawl Kashmiri Work size 30" X 72"  
(Hand Embroidered)

## TRADITIONAL FLOOR COVERINGS

HAND KNOTTED CARPETS, FARASHI AND NAMDA.

Pakistan has a place in the export trade of hand knotted woollen carpets in world markets. They have received a tremendous fillip during all these years with the producers and consumers encouragement.

Hand knotted carpet is a product of the skill of designers and weavers mingled in the technique. Designs are harmoniously set in a formal array of floral or geometrical arrangements and knotting is done on the loom by skillful fingeres of hereditary craftsmen.

Pakistan is producing hand knotted pile carpets with traditional excellence in various qualities, sizes and designs floral and geometrical.

Daree is a hand woven product with harmonious combination of cotton warp and woollen weft. Daree woven in exquisitely designed floral, geometrical or abstract patterns make an attractive floor covering with quality of durability, and fancy of colourful setting.

Farashi is the traditional name of hand woven floor covering. It is an exquisite rural craft of Sindh cleverly conceived with the combination of hand spun yarn of camel or goat hair in natural colour and the cotton yarn. Designs employed in Farashi are either simple striped or intricate geometrical. Farashi being strong in texture makes a durable floor covering coupled with glitter of tradition.

Namda is the cultural name of a felt carpet and has set a tradition as a floor covering. It is made of pressed rolled wool which makes the base for woollen yarn embroidery onto. Designs are generally styled depicting flowers and leaves, Animal figures, folk life and scenic views.







46

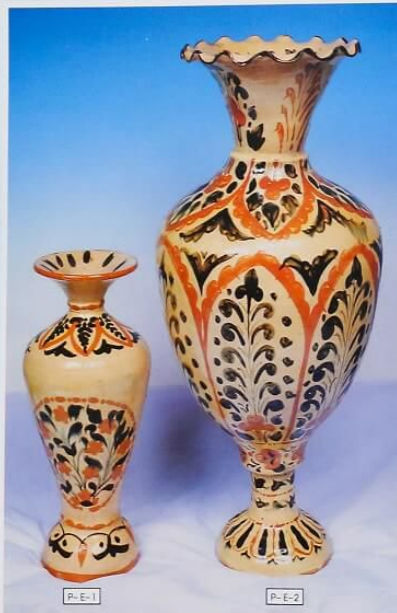
SSIC



SSIC

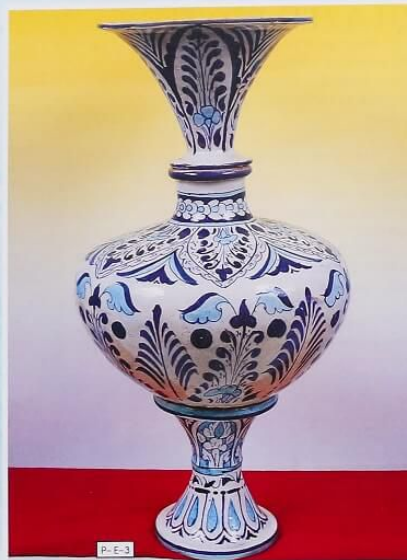


47



P-E-1

P-E-2



P-E-3

1. Sindhi pottery vase size 18"
2. Sindhi pottery vase size 24"
3. Sindhi pottery vase size 24" (3 Parts)

SSIC



P-E-4

P-E-5

P-E-6



4. Sindhi Pottery Vase 10"
5. Sindhi Pottery Surahi Vase size 12"
6. Sindhi Pottery Vase size 12"
7. Sindhi Pottery Vase size 12"
8. Sindhi Pottery Vase size 10"
9. Sindhi Pottery Vase size 12"
10. Sindhi Pottery Flower Pot 12"
11. Sindhi Pottery Plate 12"
12. Sindhi Pottery Plate 12"
13. Sindhi Pottery Finger Bowl 5" dia



P-E-7

P-E-8

P-E-9

P-E-10



P-E-11

P-E-12

P-E-13

SSIC

35





TEX-A 50

- 47. Sindhi Traditional Bag Cover Embroidered.
- 48. Sindhi Traditional Dress Front Embroidered with Mirror work.
- 49. Sindhi Traditional Bag Cover Embroidered.
- 50. Sindhi Traditional Pillow Cover Embroidered with Mirror work.
- 51. Sindhi Traditional Dress Front Embroidered.
- 52. Sindhi Traditional Dress Front Embroidered.
- 53. Sindhi Traditional Dress Front Embroidered.
- 54. Sindhi Traditional Dress Front Embroidered.



TEX-A 54

SSIC



TEX-A 55



TEX-A 56

TEX-A 57



TEX-A 58

TEX-A 59

TEX-A 60

- 55. Sindhi Traditional Silken Sui cloth Hand Woven.
- 56. Sindhi Traditional Embroidered wall Hanging 25" square.
- 57. Sindhi Traditional Embroidered wall Hanging 35" square.
- 58. Baluchi Dress Front Embroidered with Mirror.
- 59. Baluchi Dress Front Embroidered with Mirror.
- 60. Baluchi Dress Front Embroidered with Mirror.

13

SSIC





WC-G-7



WC-G-12(a)

WC-G-12(b)



WC-G-8

WC-G-9

WC-G-10

WC-G-11



WC-G-13(a)

WC-G-13(b)

WC-G-13(c)

WC-G-13(d)

- WC-G-7 Hand knotted woolen carpet Persian design quality 14/16 size 4 X 6  
 WC-G-8 Hand knotted woolen carpet Mori design quality 9/18 size 1 X 2  
 WC-G-9 Hand knotted woolen carpet figure design quality 9/18 size 1 X 1  
 WC-G-10 Hand knotted woolen carpet quality 9/18 size 1 X 2  
 WC-G-11 Hand knotted woolen carpet figure design quality 9/18 size 1 X 1  
 WC-G-12 (a) Hand knotted woolen carpet Mori design quality 9/18 size 3 X 5  
 (b) Hand knotted woolen carpet Mori design quality 9/18 size 1 X 1

- (c) Hand knotted woolen carpet Mori design quality 9/18 size 1 X 1  
 (d) Hand knotted woolen carpet Mori design quality 9/18 size 1 X 1  
 (e) Hand knotted woolen carpet Mori design quality 9/18 size 1 X 1  
 WC-G-13 (a) Hand knotted woolen carpet Mori design quality 9/18 size 2 X 3  
 (b) Hand knotted woolen carpet Mori design quality 9/18 size 2 X 3  
 (c) Hand knotted woolen carpet Mori design quality 9/18 size 2 X 3  
 (d) Hand knotted woolen carpet Mori design quality 9/18 size 2 X 3



WC-G-14 Hand knotted woolen carpet Hunting design quality 14/16 size 4 1/2 X 7



WC-G-15 Hand knotted woolen carpet Hunting design quality 14/16 size 3 1/2 X 5 1/2





WC-G-17



WC-G-18



WC-G-20



WC-G-21

16. Hand knotted woolen carpet Persian design quality 14/16 size 4 X 6  
17. Hand knotted woolen carpet Mori design quality 9/18 size 3 X 5  
18. Hand knotted woolen carpet Mori design quality 9/18 size 4 X 6

19. Hand knotted woolen carpet Mori design quality 9/18 size 1 X 1  
20. Hand knotted woolen carpet Mori design quality 9/18 size 4 X 6  
21. Hand knotted woolen worsted carpet Persian design quality 16/18 size 4 X 6

SSIC



WC-G-22



WC-G-23



WC-G-24



WC-G-25

22. Hand knotted woolen carpet Persian design quality 14/16 size 4 X 6  
23. Hand knotted woolen worsted carpet Persian design quality 14/16 size 3 X 5

24. Hand knotted woolen carpet quality 11/22 size 4 X 6  
25. Hand knotted woolen carpet quality 11/22 size 4 X 6

SSIC

51





32. Woolen Camel Hair Dail (Traditional Fash) 4 x 6  
33. Woolen Dail size 2 x 9  
34. Woolen Dail size 2 x 6  
35. Woolen Dail size 4 x 6





36. Woollen camel hair Dori (Traditional Karachi) 4 X 6  
37. Woollen Dori size 4 X 6  
38. Woollen Dori size 4 X 6  
39. Woollen Dori size 4 X 6

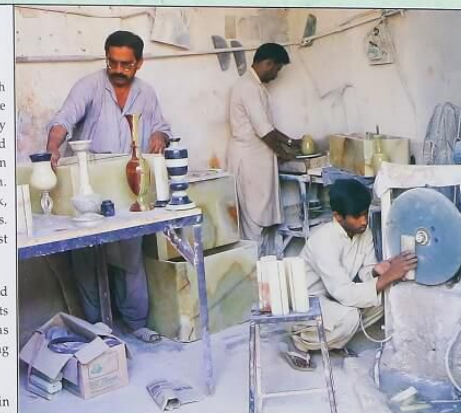


## ONYX CRAFTS

Pakistan has been bestowed by nature with multitude reserves of onyx in the mountains in the province of Baluchistan. Onyx comes from the family of Marble but is distinctive for its beautiful colours and shades. The colours range from light green to medium and jade green, from copper brown to dark brown. And within each colour the varying effects of dark, medium and light shades interplay through the veins. Onyx has unique quality of being transparent against light.

The technique of inlaying the delicately cut and shaped multicoloured Sea Shells onto the Onyx crafts in floral or geometrical designs and patterns has historical linkage with centuries old art of inlaying diamonds and gems onto the objects of marble.

A variety of articles emphasising simplicity in form and effect to suit the present day life style are produced in Onyx - namely Vases, Flower Pots, Table Lamps, Pedestal Lamps, Bowls, Plates and Dishes, Goblets, Jars, Sherry Sets, Water Sets, Writing Table Sets, Paper Weights, Pen Stands, Key Chains, Birds and Animal Figures, Ashtrays, Candle stands etc.





ROUGH STONE



OX-H-1

OX-H-2

OX-H-3

Onyx flower pot size 10" X 10"  
Onyx stand table size 30" X 10"  
Onyx vase size 24 X 8"





4. Onyx vase green size 10"X4"
5. Onyx vase size 3"X7"
6. Onyx vase size 12"X4"
7. Onyx vase size 2 1/2"X8"
8. Onyx vase size 3"X8"
9. Onyx vase size 10"X4"
10. Onyx vase size 16"X5"
11. Onyx vase size 12"X5"
12. Onyx vase (Cylindrical) size 3"X8"
13. Onyx vase (Cylindrical) size 3"X10"
14. Onyx vase (Cylindrical) size 4"X12"
15. Onyx vase (Cylindrical) size 9"X3 1/2"
16. Onyx vase (Cylindrical) size 3"X6"



17. Onyx vase size 4"X12"
18. Onyx vase size 5"X12"
19. Onyx vase size 5"X10"
20. Onyx vase green size 3"X8"
21. Onyx vase size 3"X8"
22. Onyx vase size 4"X12"
23. Onyx vase size 10"X4"
24. Onyx vase size 9"X3 1/2"
25. Onyx flower pot green size 5"X8"
26. Onyx flower pot green size 4"X8"
27. Onyx vase (jar shape) size 5"X10"
28. Onyx vase (jar shape) size 5"X9"





- 29. Onyx vase patch work coloured size 3'X 8"
- 30. Onyx vase patch work coloured size 3'X 8"
- 31. Onyx vase patch work coloured size 3'X 8"
- 32. Onyx vase patch work coloured size 3'X 8"
- 33. Onyx vase patch work coloured size 2'X 6"
- 34. Onyx vase patch work coloured size 3'X 8"
- 35. Black marble vase size 2 1/2'X 8"
- 36. Onyx vase patch work coloured size 4'X 12"
- 37. Golden marble vase size 3'X 6"
- 38. Onyx vase patch work size 3'X 8"
- 39. Onyx vase patch work size 2'X 6"
- 40. Onyx candy jar green size 6'X 7"
- 41. Onyx flower pot size 8'X 5"
- 42. Onyx flower pot (jar shape) size 10'X 12"
- 43. Onyx flower pot size 8'X 8"



- 44. Onyx lamp green shell inlaid size 12"
- 45. Onyx lamp white shell inlaid size 12"
- 46. (a) Onyx vase shell inlaid size 3'X 6"
- (b) Onyx vase shell inlaid size 3'X 6"
- (c) Onyx vase white shell inlaid size 3'X 6"
- (d) Onyx vase white shell inlaid size 3'X 8"
- (e) Onyx vase shell inlaid size 3'X 6"
- (f) Onyx vase shell inlaid size 7'X 3"
- (g) Onyx vase shell inlaid size 3'X 6"
- 47. Onyx coaster (plate) shell inlaid size 3" dia
- 48. Onyx pedestal lamp green 60"
- 49. Onyx flower pot with lamp stand size 30"
- 50. Onyx pedestal lamp green size 60"







- |  |  |
|--|--|
| 51. Onyx flower pot size 10" X 8"        | 58. Onyx flower pot size 8" X 10"          |
| 52. Onyx stand table with light size 25" | 59. Onyx lamp patch work coloured size 16" |
| 53. Folded stone vase size 3" X 8"       | 60. Onyx lamp patch work coloured size 12" |
| 54. Folded ashtray size 5"               | 61. Folded stone lamp green size 16"       |
| 55. Folded stone stand table size 25"    | 62. Folded stone lamp green size 12"       |
| 56. Onyx flower pot green size 10" X 10" | 63. Onyx lamp patch work size 16"          |
| 57. Onyx flower pot green size 6" X 8"   |  |



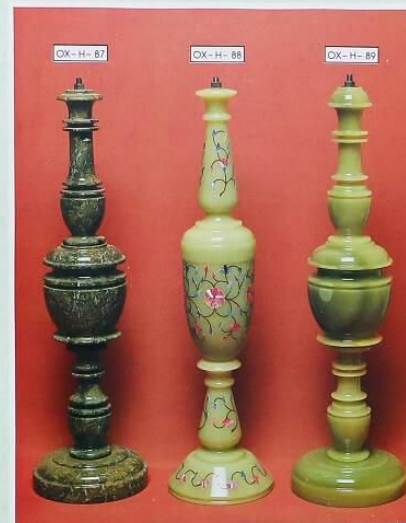
- |                                  |                        |
|----------------------------------|------------------------|
| 64. Onyx lamp green size 14"     | 70. Onyx lamp size 10" |
| 65. Onyx lamp green size 14"     | 71. Onyx lamp size 8"  |
| 66. Onyx lamp green size 14"     | 72. Onyx lamp size 12" |
| 67. Onyx lamp green size 12"     | 73. Onyx lamp size 10" |
| 68. Onyx lamp green size 6" X 4" | 74. Onyx lamp size 8"  |
| 69. Onyx lamp size 8"            |                        |





75. Onyx lamp (three lights)  
76. Onyx chimney lamp with brass fitting size 18"  
77. Onyx lamp (two lights)  
78. Onyx candle stand three candles.  
79. Onyx candle stand two candles.  
80. Onyx candle five candles.

81. Onyx candle one candles.  
82. Onyx candle three candles.  
83. Onyx candle stand 4"  
84. Onyx globe lamp green size 6" dia.  
85. Onyx globe lamp green size 8" dia.  
86. Onyx globe lamp green size 5" dia.

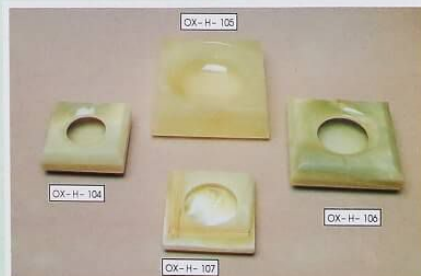


87. Golden stone lamp size 24"  
88. Onyx lamp shell inlaid size 24"  
89. Onyx lamp green size 24"  
90. Onyx lamp Mushroom Design size 7"  
91. Onyx lamp Mushroom Design size 9"

92. Onyx lamp pagoda design size 12"  
93. Onyx lamp pagoda design size 10"  
94. Onyx lamp green size 12"  
95. Onyx lamp size 14"  
96. Onyx lamp size 12"







97. Onyx smoking set brass fitting.  
98. Onyx smoking set.  
99. Onyx ashtray with brass fitting size 4".  
100. Onyx Cig. box with brass fitting size 5".

101. Onyx ashtray with brass fitting size 5".  
102. Onyx ashtray green with brass fitting size 5".  
103. Onyx ashtray with brass fitting size 5".  
104. Onyx ashtray size 5" X 1 1/2".

105. Onyx ashtray size 6" X 2".  
106. Onyx ashtray size 4" X 1 1/2".  
107. Onyx ashtray with brass fitting size 4" X 1 1/2".



108. Onyx ashtray green.  
(1) 5" X 1 1/2" (2) 5" X 2" (3) 6" X 2" (4) 4" X 1 1/2" (5) 5" X 2" (6) 5" X 1 1/2" (7) 5" X 2" (8) 4" X 1 1/2".  
109. 1. Granite stone ashtray 2. Zebra Stone ashtray 3. Fossil stone ashtray  
(1) 5" X 2" (2) 4" X 1 1/2" (3) 5" X 2" (4) 5" X 2" (5) 5" X 1 1/2" (6) 5" X 2".



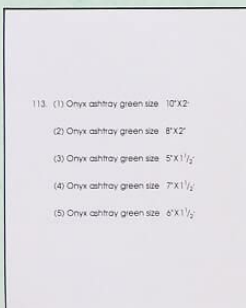
110. Onyx ashtray shell inlaid.  
(1) 5" X 1 1/2" (2) 6" X 1 1/2" (3) 7" X 2" (4) 5" X 1 1/2" (5) 7" X 2" (6) 7" X 2" (7) 4" X 1 1/2" (8) 4" X 1 1/2".  
111. Onyx Cigarette Set green with brass fitting.





OX-H-112

112. (1) Onyx ashtray patch work coloured size:  $5' \times 1\frac{1}{2}$   
 (2) Onyx ashtray patch work coloured size:  $4' \times 1\frac{1}{4}$   
 (3) Onyx ashtray patch work coloured size:  $8' \times 2'$   
 (4) Onyx ashtray patch work coloured size:  $4' \times 1\frac{1}{2}$   
 (5) Onyx ashtray patch work coloured size:  $6' \times 1\frac{1}{2}$   
 (6) Onyx ashtray patch work coloured size:  $5' \times 1\frac{1}{4}$



OX-H-113

113. (1) Onyx ashtray green size:  $10' \times 2'$   
 (2) Onyx ashtray green size:  $8' \times 2'$   
 (3) Onyx ashtray green size:  $5' \times 1\frac{1}{4}$   
 (4) Onyx ashtray green size:  $7' \times 1\frac{1}{2}$   
 (5) Onyx ashtray green size:  $6' \times 1\frac{1}{2}$



SSIC



OX-H-114

OX-H-115

OX-H-116

OX-H-118

OX-H-117



OX-H-119

OX-H-120



OX-H-121

OX-H-122

114. Onyx candle stand patch work (5 branches) 12".  
 115. Onyx candle stand patch work (5 branches) 12".  
 116. Granite stone telephone set.  
 117. Onyx telephone set.  
 118. Onyx telephone set patch work.  
 119. Onyx telephone set green.  
 120. Onyx telephone set green.  
 121. Onyx telephone set green.  
 122. Onyx telephone set green.

69

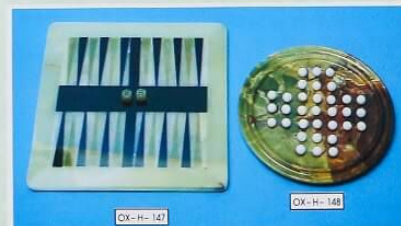




123. Onyx photo frame size 10"x8"  
 124. Onyx table clock green size 6"  
 125. Onyx photo frame green size 6"x4"  
 126. Onyx accessories office set green (set of 3 pcs.)  
 127. (1) Fossil stone wall clock size 10"  
 (2) Onyx wall clock green shell inlaid size 10"  
 (3) Onyx table clock green size 10"  
 (4) Onyx wall clock green size 10"  
 (5) Granite stone table clock size 8"  
 128. Onyx Moenjadary seals with brass fitting set of 4 pcs.



129. Onyx Cigarette Box patch work coloured size 6"  
 130. Fossil stone office accessories set  
 131. Onyx Cigarette Box green size 6"  
 132. Onyx pen stand green size 9"x6"  
 133. Onyx pen stand shell inlaid size 6"  
 134. Onyx Calendar with pen stand size 12"x8"  
 135. Onyx jewellery box green size 6"x4"  
 136. Onyx plate shell inlaid size 6" dia.  
 137. Onyx plate shell inlaid size 10" dia.  
 138. Onyx plate shell inlaid size 8" dia.



139. Onyx plate shell inlaid size 8" dia.  
140. Onyx plate shell inlaid size 12" dia.  
141. Onyx plate shell inlaid size 10" dia.  
142. (a) Onyx grapes bunch green 50 grapes.  
(b) Onyx grapes bunch green 18 grapes.  
143. Onyx apple (paper weight) size 3".  
144. Onyx banana.  
145. Onyx tray size 12".  
146. Onyx Egg (paper weights) green size 3".  
147. Onyx back Gorman game size 12".  
148. Onyx roller game size 10".  
149. Onyx chess board with chessmen green size 15"x16".

72



SSIC



150. Onyx candy jar size 6"x4".  
151. Onyx candy jar size 8"x4".  
152. Onyx candy jar size 8"x6".  
153. Onyx candy jar size 6"x4".  
154. (1) Onyx candy pot green size 6"x3".  
(2) Onyx candy pot size 3"x6".  
(3) Onyx candy pot size 6"x3".  
(4) Onyx candy pot size 4"x3".  
(5) Onyx candy pot size 5"x3".  
(6) Onyx candy pot size 5"x3".  
155. Onyx beer mug size 6"x5".  
156. Onyx beer mug size 6"x5".  
157. Onyx bowl set green size 10".  
158. Onyx water set green (set of 7 pcs.).  
159. Onyx bowl green size 10".  
160. Onyx bowl green size 10".

SSIC



73





161. (1) Onyx bowl green size 5"  
(2) Onyx bowl green size 8"  
(3) Onyx bowl green size 6"  
(4) Onyx bowl size 4"  
(5) Onyx bowl size 5"
162. (1) Onyx powder pot shell inlaid size 5"  
(2) Onyx powder pot shell inlaid size 5"  
(3) Onyx powder pot shell inlaid full work size 5"  
(4) Onyx powder pot shell inlaid size 3"  
(5) Onyx powder pot shell inlaid size 1 1/2"
- (6) Onyx powder pot shell inlaid size 4"  
(7) Onyx powder pot shell inlaid size 4"  
(8) Onyx powder pot shell inlaid size 4"
163. Onyx pencil jar shell inlaid 3"x4"
164. Onyx powder pot shell inlaid size 5"
165. Onyx powder pot shell inlaid full work size 5"
166. Onyx Rose Cup lighter shell inlaid size 2 7/8"x3"
167. Onyx powder pot shell inlaid size 3"
168. Onyx powder pot shell inlaid size 1 1/2"
169. Onyx powder pot shell inlaid size 3"
170. Onyx powder pot shell inlaid size 4"



171. (1) Onyx candy pot patch work coloured size 4"  
(2) Onyx candy pot patch work coloured size 5"  
(3) Fossil stone candy pot size 5"  
(4) Fossil stone candy pot size 6"  
(5) Onyx candy pot size 5"  
(6) Fossil stone candy pot size 4"  
(7) Zebra stone candy pot size 6"  
(8) Zebra stone candy pot size 5"
172. Fossil stone bowl size 8" dia.  
173. Onyx bowl size 8" dia.  
174. Fossil stone bowl size 4" dia.  
175. Black stone bowl size 6" dia.  
176. Zebra stone bowl size 6" dia.  
177. Fossil stone bowl size 5" dia.  
178. Onyx sherry set with Tray (set of 8 pcs.)





179. Onyx sherry green (set of 7 pcs.)  
 180. (1) Onyx wine glass size 3'x5"  
 (2) Onyx wine glass size 5"  
 (3) Onyx wine glass size 5"  
 181. (4) Onyx wine glass size 2 1/2'x4"  
 (5) Onyx wine glass size 2 1/2'x4"  
 (6) Onyx sherry glass green size 2'x3"  
 182. (7) Onyx sherry glass green size 2'x3"  
 183. Onyx cup saucer size 3'x4"  
 184. Onyx tea set green (set of 9 pcs.)



185. Onyx shark coloured 5"  
 186. (1) Onyx dolphin green 6"  
 (2) Onyx fish 6"  
 (3) Onyx fish coloured size 6"  
 (4) Onyx fish coloured 10"  
 (5) Onyx fish coloured size 6"  
 (6) Onyx fish coloured size 6"  
 (7) Onyx fish coloured size 6"  
 (8) Onyx fish coloured size 5"  
 (9) Onyx fish coloured size 4"

187. (1) Onyx swan size 3"  
 (2) Onyx swan size 4"  
 (3) Onyx swan size 6"  
 (4) Onyx camel size 8"  
 (5) Onyx elephant size 4"  
 (6) Onyx bull size 4"  
 (7) Onyx elephant size 3"  
 (8) Onyx eagle size 4"  
 (9) Onyx hog size 4"  
 (10) Onyx duck size 5"  
 (11) Onyx rabbit size 3"







196. (1) Onyx Fish green size 3"x5"  
 (2) Onyx Dolphin Fish size 4"  
 Onyx Swan size 5"  
 197. (1) Onyx Tortoise size 3"  
 (2) Onyx Tortoise size 5"  
 (3) Onyx Tortoise size 10"  
 (4) Onyx Tortoise size 4"  
 (5) Onyx Tortoise size 8"

188. Fossil stone Horse size 10"  
 189. Fossil stone Eagle size 12"  
 190. Fossil stone Horse size 8"  
 191. Fossil stone Book Ends (Horse Head) size 3"x5"  
 192. Fossil stone Elephant size 5"  
 193. Onyx Book Ends (Horse Head) size 3"x5"  
 194. Fossil stone Tortoise size 8"  
 195. Fossil stone Tortoise size 6"



199. (1) Onyx Eagle green size 8"  
 (2) Onyx Eagle green size 12"  
 (3) Onyx Eagle green size 5"  
 200. (1) Onyx Swan size 6"  
 (2) Onyx Swan size 4"  
 201. (1) Onyx Peacock green size 8"  
 (2) Onyx Peacock green size 10"  
 (3) Onyx Peacock green size 8"  
 202. (1) Onyx elephant green size 10"  
 (2) Onyx elephant green size 10"  
 (3) Onyx elephant green size 5"  
 (4) Onyx elephant green size 3"  
 (5) Onyx elephant green size 5"  
 (6) Onyx elephant green size 2"  
 (7) Onyx elephant green size 2"  
 (8) Onyx elephant green size 2"

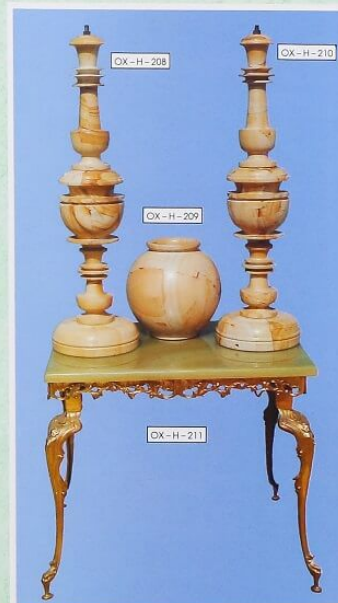




203. Onyx Horse green size 10" 204. Onyx Horse green size 6" 205. Onyx Horse green size 10" 206. Onyx Horse green size 8" 207. Onyx Horse green size 6"

80

SSIC



SSIC



208. Marble Teak Colour Lamp size 24" 213. White Marble Corner Table size 8" X 14" 209. Marble Teak Colour Flower Pot size 8" X 8" 214. Marble Teak Colour Flower Vase size 2" X 8" 210. Marble Teak Colour Lamp size 24" 215. Marble Teak Colour Flower Vase size 2 1/2" X 8" 211. Onyx Table with Brass Fitting size 24" 216. Marble Teak Colour Flower Vase size 4" X 6" 212. Marble Teak Colour Flower Pot size 7" X 7" 217. Marble Teak Colour Telephone Table size 30" X 12"

81





- |  |  |
|--|--|
| 218. Onyx Table with Brass Fitting, size 18" X 18" | 222. Marble Teak Colour Flower Vase size 4" X 12"  |
| 219. Onyx Table with Brass Fitting, size 14" X 14" | 223. Marble Teak Colour Flower Vase size 4" X 12"  |
| 220. Onyx Table with Brass Fitting, size 14" X 14" | 224. Marble Teak Colour Flower Vase size 4" X 10"  |
| 221. Marble Teak Colour Flower Vase size 3" X 10"  | 225. Onyx Table with Brass Fitting, size 20" X 20" |



## CAMEL SKIN CRAFTS

The tedious technique of shaping the camel skin crafts and decorating them with indigenously prepared lacquer colours is an age old tradition. The camel skin is first cleaned to become transparent clear and then stretched on clay moulds of the desired objects to attain the firm shape. The shaped articles are then merrily decorated with high degree of excellence in floral or intermingled geometrical patterns in bright colours. Decorative chronicles and depictions of Royal Moghal courts, Portraits and miniatures, natural land scapes, royal hunting scenes and animal figures and birds are also transformed in gay colours onto camel skin objects with masterly skill to produce impact of realism and impressionism. Conventionally, table lamps, hanging lamps, vases, dishes, bowls, and plates are produced commercially in camel skin.





- 4. Camel Skin Lamp fine work size 10"X12".
- 5. Camel Skin Lamp fancy work size 10"X12".
- 6. Camel Skin Lamp Akber Shahi size 22"X24".
- 7. Camel Skin Lamp Akber Shahi size 24"X26".







8. Camel Skin Lamp figure work size 10"X12"  
9. Camel Skin Lamp figure work size 10"X12"  
10. Camel Skin Lamp fancy work size 12"X14"  
11. Camel Skin Lamp fancy work size 10"X12"  
12. Camel Skin Lamp Akber Shahi round size 8"  
13. Camel Skin Lamp Akber Shahi round size 10"  
14. Camel Skin Lamp Akber Shahi round size 12"  
15. Camel Skin Lamp Akber Shahi size 6"X8"  
16. Camel Skin Lamp Akber Shahi size 8"X10"



SSIC



17. Camel Skin Flower vase fancy work size 12"  
18. Camel Skin Flower vase fancy work size 16"  
19. Camel Skin Flower vase fancy work size 12"  
20. Camel Skin Flower vase fancy work size 18"

SSIC



21. Camel Skin Flower vase fancy work size 36". 23. Camel Skin Flower vase fancy work size 12".  
22. Camel Skin Flower vase fancy work size 24". 24. Camel Skin Flower vase fancy work size 18".

## METAL CRAFTS

### BRASS, COPPER AND WHITE METAL (GERMAN SILVER)

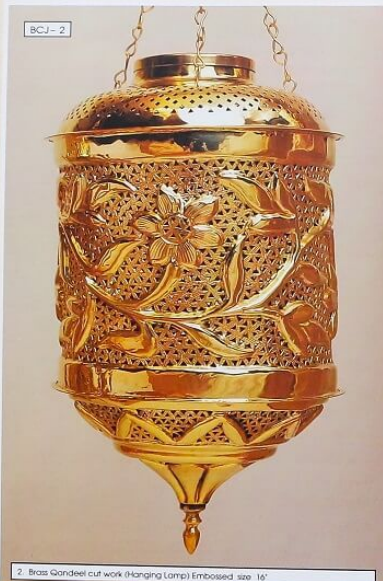
In the sphere of handicrafts, the brass, copper and white Metal Crafts have perhaps the widest techniques, designs, traditions and excellence to offer. A wide range of articles namely — Vases and Flower Pots, Plates, Dishes, Trays, Candle Stands, Lamps, Ashtrays, Chandeliers, Bowls, Planters, Tea Sets, Jewellery Boxes, Samawar, Kettles, Table Bells, Goblets, Sherry Sets, Water jugs and Water Sets, Seals, Animal Figures etc. are produced commercially. These are either cast or shaped by hand, then delicately chased, engraved or embossed often coupled with delicate cut work. Designs transformed onto the articles are either floral or geometrical arranged on a spiral of lines or through intermingled scrolls. Enamel colours are carefully inlaid onto engraved articles. Some articles are studded with Moenjodaro seals. In short the designs, shapes and patterns employed onto metal crafts are closely related to tradition and Culture of various regions. While retaining their decorative lustre they carry utilitative values too, to fit into modern way of life.







90



SSIC

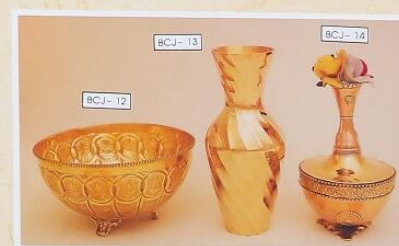


SSIC

91

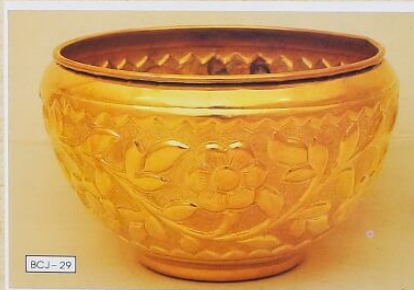


5. Brass Gandeel cut work (Hanging Lamp) size 18".
6. Brass Gandeel cut work (Hanging Lamp) size 15".
7. Brass Lamp cut work size 48".
8. Brass Lamp cut work size 36".
9. Brass Attaba Lamp cut work size 36" size available 48" - 60" - 72".



10. Brass bowl seal & stone studded size 8" sizes available 5" - 6".
11. Brass Lota stone studded.
12. Brass Bowl Embossed size 8" sizes available 5" - 6".
13. Brass vase (Bhangari) size 8".
14. Copper vase with Brass ships size 8".
15. Copper Bowl with handles size 8" sizes available 4" - 5" - 6".
16. Copper Bowl size 10" sizes available 6" - 8" - 12".
17. Copper Nut Bowl with Brass ships size 4".
18. Copper Bowl seal studded size 8" sizes available 4" - 6".
19. Copper Ice Bucket seal studded size 7".
20. Copper Finger Bowl seal studded size 4".





- |  |   |
|--|---|
| 21. Copper Kettle (Tea Pot) Embossed size 6".        | 25. Brass Flower Pot plain size 14".    |
| 22. Copper Kettle (Tea Pot) Embossed size 7 1/2".    | sizes available 6" - 8" - 10" - 12".    |
| 23. Copper Kettle (Tea Pot) chased work size 7 1/2". | 26. Brass Flower Pot Embossed size 10". |
| 24. Copper Flower Pot Embossed size 12".             | 27. Brass Flower Pot Embossed size 8".  |
| sizes available 6" - 8" - 10".                       | 28. Brass Flower Pot Embossed size 12". |
|  | 29. Brass Flower Pot Embossed size 12". |
|  | sizes available 6" - 8" - 10".          |



- |  |  |
|--|--|
| 30. Brass vase Engraved coloured Fine work size 24" and sizes available 6" - 8" - 10" - 12" - 14" - 16" - 18" - 20". | 35. Brass vase (Bangri) size 10".                      |
| 31. Brass vase Engraved coloured Fine work size 18".   | 36. Brass vase (Bangri) size 8".                       |
| 32. Brass vase Engraved coloured Fine work size 24" and sizes available 12" - 14" - 16" - 18" - 20".                 | 37. Brass vase (Rashmi work) sizes 10".                |
| 33. Brass vase (Bangri) size 6".   | 38. Brass Jar (Ayubi) coloured (Rashmi work) size 12". |
| 34. Brass Surahi Plain size 8".  | 39. Brass vase coloured (Rashmi work) size 12".        |
|  | 40. Brass vase coloured (Rashmi work) size 18".        |
|  | sizes available 8" - 10" - 12" - 14".                  |





41. Brass vase (tush) Engraved coloured size 8"  
42. Brass vase (tush) Engraved coloured size 10"  
43. Brass vase (tush) Engraved coloured size 8"  
44. Brass vase Engraved coloured size 20"  
45. Brass vase stone studded size 18"
46. Brass vase stone studded size 20"  
47. Brass vase stone studded (Wadmi) size 12"  
48. Brass vase stone studded size 12"  
49. Brass vase stone studded size 10"  
50. Brass vase stone studded and copper chips size 10"



51. Brass vase Engraved coloured fine work size 20"  
size 20"  
size 20"  
size 20"  
size 20"  
size 20"  
size 20"  
size 20"  
size 20"  
size 20"
52. Brass vase (Engraved) Aydi coloured size 12"  
53. Brass vase fine work coloured size 20"  
54. Brass vase Black size 36"  
size available 24" - 30"  
55. Brass vase (Naki) Black Embossed size 8"  
56. Brass vase Black Embossed size 8"  
57. Brass vase Black Embossed size 24"  
58. Brass vase Black Embossed size 12"  
59. Brass vase Black Embossed size 10"





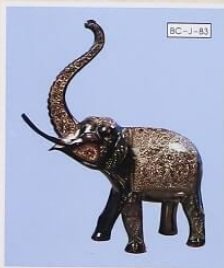


- |   |  |
|---|--|
| 60. Brass vase Black Engraved size 9                    | 66. Brass flower vase (Ayub) Engraved black size 12"     |
| 61. Brass vase Engraved coloured size 10"               | 67. Brass flower vase (Sunah) Engraved coloured size 12" |
| 62. Brass vase Engraved coloured size 12"               | 68. Brass flower vase engraved black size 24"            |
| 63. Brass vase (Kashmir) Engraved coloured size 12"     | 69. Brass flower vase Engraved black size 20"            |
| 64. Brass vase Engraved black size 8"                   | 70. Brass flower vase Engraved black size 18"            |
| 65. Brass flower vase (Kashmir) Engraved black size 10" |  |



- |   |  |
|---|--|
| 71. Brass Horse Engraved black size 10"         | 76. Brass vase (center) Engraved black size 8" |
| 72. Brass Peacock Engraved black size 12"       | 77. Brass Deer Engraved black size 12"         |
| 73. Brass Peacock Engraved black size 18"       | 78. Brass Camel Engraved black size 12"        |
| 74. Brass vase (center) Engraved black size 12" | 79. Brass Horse Engraved black size 12"        |
| 75. Brass vase (center) Engraved black size 10" |  |





- 80. Brass Elephant Engraved black size 12"
- 81. Brass Peacock Engraved black size 18"
- 82. Brass Horse Engraved black size 12"
- 83. Brass Elephant Engraved black size 24" sizes available 12" - 16" - 18"
- 84. Brass Afaba Engraved coloured sizes 12"
- 85. Brass Afaba Engraved coloured sizes 16"
- 86. Brass Afaba Engraved coloured sizes 16"
- 87. Copper Afaba Embossed (Pethawari) sizes 15"
- 88. Copper Afaba Embossed (Pethawari) sizes 15"
- 89. Copper Afaba Embossed (Pethawari) sizes 16"



- 71. Brass Horse Engraved black size 10"
- 72. Brass Peacock Engraved black size 12"
- 73. Brass Peacock Engraved black size 18"
- 74. Brass vase (center) Engraved black size 12"
- 75. Brass vase (center) Engraved black size 10"
- 76. Brass vase (center) Engraved black size 8"
- 77. Brass Deer Engraved black size 12"
- 78. Brass Camel Engraved black size 12"
- 79. Brass Horse Engraved black size 12"







- 80. Brass Elephant Engraved black size 12"
- 81. Brass peacock Engraved black size 18"
- 82. Brass Horse Engraved black size 12"
- 83. Brass Elephant Engraved black size 24" sizes available 12" - 16" - 18"
- 84. Brass Afghani Engraved coloured size 12"
- 85. Brass Afghani Engraved coloured size 18"
- 86. Brass Afghani Engraved coloured size 16"
- 87. Copper Afghani Embossed (Peshawari) size 15"
- 88. Copper Afghani Embossed (Peshawari) size 15"
- 89. Copper Afghani Embossed (Peshawari) size 14"



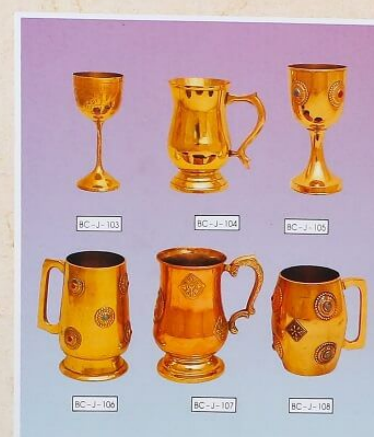
90. Brass Afghani Engraved coloured size 12" (set of 8 pcs.)



91. Brass Afghani set stone mudded size 12" (set of 8 pcs.)



- 92. Brass Samovar with stand Engraved size 13"
- 93. Brass Dala Pot Embossed size 10"
- 94. Copper Tea Pot Seals Studded size 10"
- 95. Copper Tea Set Silver encrusted standard size (set of 4 pcs.)
- 96. Copper Flower vase with Handle Embossed size 10"
- 97. Copper Flower vase Seal Studded size 12"
- 98. Copper Flower vase Seal Studded size 10"
- 99. Copper vase Jug shape Seal Studded size 8"
- 100. Brass Tea Set Embossed standard size (set of 4 pcs.)



- 101. Copper Samovar Plain size 18"
- 102. Copper Coffee Pot Ahaba Engraved size 10"
- 103. Brass wine glass Engraved size 6"
- 104. Brass Bear Mug Plain size 6"
- 105. Brass wine glass stone studded size 6"
- 106. Brass Bear Mug seals studded size 6"
- 107. Copper Bear Mug silver encrusted size 6"
- 108. Brass Bear Mug silver encrusted size 5"
- 109. Brass Ahitay round Embossed size 6"
- 110. Brass Ahitay round cut work size 5"
- 111. Brass Ahitay shell shape size 4"
- 112. Brass Ahitay Embossed cut work size 8"





113. Brass Hugga Rock Embossed size 12"  
114. Brass Hugga Rock Embossed size 14"  
115. Brass Hugga Rock Embossed size 6"  
116. 1. Brass Shoe shape  
Ashtray size 4"  
2. Brass Ashtray Camel shape  
Embossed size 4"  
3. Brass Ashtray Shoe shape  
Plain size 4"  
4. Brass Ashtray Embossed size 5"  
5. Brass Ashtray Embossed size 6"  
6. Brass Ashtray Embossed size 5"  
7. Brass Ashtray Fish shape  
Embossed size 6"  
8. Brass Ashtray Shoe shape  
Embossed size 3"  
9. Brass Ashtray Fish shape size 4"  
117. Copper Ashtray seed  
studded size 4"  
118. Copper Nest Ashtray seed  
studded size 6"  
119. Copper Ashtray round  
Brass studded size 4"  
120. Brass Hat Ashtray Embossed size 9"  
121. Brass Ashtray (Pashm)  
Embossed size 22"  
122. Brass Ashtray Gold  
Embossed Large size



123. Brass Alan Din  
Candle stand size 6"  
124. Brass Candle stand  
3 Branches Bell with stick  
125. Brass Candle stand  
Bell shape size 6"  
126. Brass Candle stand size 8"  
127. Brass Candle stand size 10"  
128. Brass Candle stand  
five branches size 12"  
129. Brass Candle stand size 10"  
130. Brass Candle stand  
leaf shape base size 8"  
131. Brass Bucket size 6"  
132. Brass Pot with handles size 6"  
133. Brass Rose Bowl  
Engraved size 4"  
134. Brass Powder Pot  
cappie Plain size 3"  
135. Brass Bell Engraved size 6"



BC-J-136

136. Brass Planter Embossed size 12" X 12"  
 137. Brass MORTAR Embossed (2 pcs. set)  
 138. Brass Candle Stand Plain size 4"  
 139. Brass Candle Stand Embossed size 4"  
 140. Brass Candle Stand Embossed size 4"

141. (1) Brass Candle Stand Embossed size 6"  
 (2) Brass Candle Stand Embossed size 8"  
 (3) Brass Candle Stand Embossed size 6"  
 (4) Brass Candle Stand Embossed size 6"  
 (5) Brass Candle Stand Embossed size 8"  
 (6) Brass Candle Stand Embossed size 8"  
 (7) Brass Candle Stand Embossed size 8"



BC-J-137

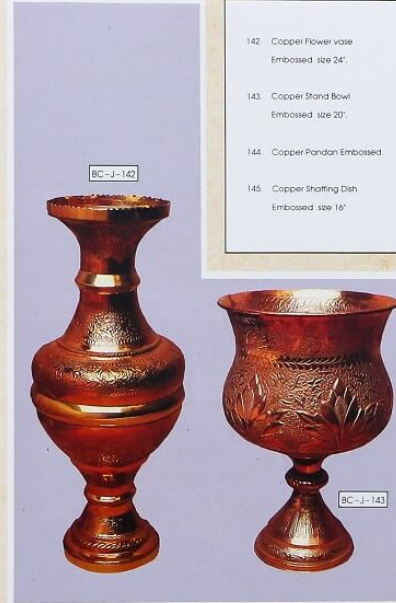
BC-J-139

BC-J-138

BC-J-140



BC-J-141



BC-J-142

BC-J-143

142. Copper Flower vase  
 Embossed size 24"  
 143. Copper Stand Bowl  
 Embossed size 20"  
 144. Copper Pandan Embossed.  
 145. Copper Shaffing Dah  
 Embossed size 16"



BC-J-144



BC-J-145





BC-J-146



BC-J-147



BC-J-148



BC-J-149

146. Copper Shaffing Dish Embossed size 18"  
147. Copper Shaffing Dish Embossed size 24"  
148. Copper Shaffing Dish Embossed size 12"  
149. Copper Service Dish Plain size 14"  
150. Brass Stork (SARAS) size available 24" - 30" - 36"  
151. Brass Stork set (SARAS) size 24" (set of 2 pcs.)



BC-J-150



BC-J-151



BC-J-152



BC-J-153

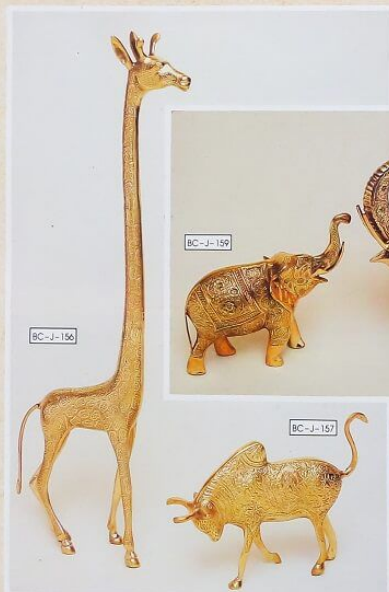
152. Brass Thai Embossed size 24"  
size available 14" - 16" - 18" - 30"  
153. Brass Thai Embossed size 24"  
size available 14" - 16" - 18"  
154. Copper Thai Embossed size 24"  
155. Copper Thai Embossed figure work size 24"



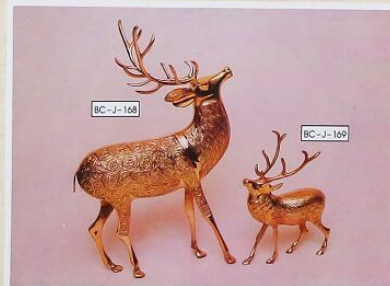
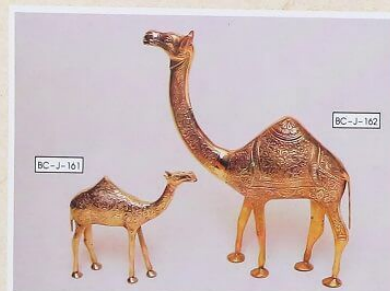
BC-J-154



BC-J-155



156. Brass ZARAF Plain size 24"  
size available  
12" - 16" - 18"
157. Brass Bull Embossed size 10"
158. Brass Elephant Embossed  
size 12"
159. Brass Elephant Embossed  
size 18" size available  
6" - 8" - 12"
160. Brass stag with stand Plain  
size 20"



161. Brass Camel Embossed size 8"
162. Brass Camel Embossed size 12"
163. Brass Kangaroo Plain size 5"
164. Brass Stag size 6"
165. Brass Donkey Plain size 8"
166. Brass Bull Embossed size 6"
167. Brass Bird Embossed size 4"
168. Brass Stag Embossed size 12"
169. Brass Stag Embossed size 8"
170. Brass Horse Embossed size 8"
171. Brass Horse Embossed size 12"



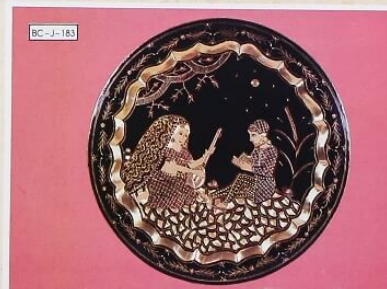


172. Brass Plate Engraved coloured size 12"  
173. Brass Dish Engraved coloured  
Figure work size 12"  
174. Brass Plate Engraved coloured size 12"  
175. Brass Plate Engraved coloured size 12"  
176. Brass Plate Engraved coloured size 10"  
177. Brass Plate Engraved coloured size 12"  
178. Brass Plate Engraved coloured size 12"  
179. Brass Thali Engraved coloured  
Figure work size 24"

112



SSIC

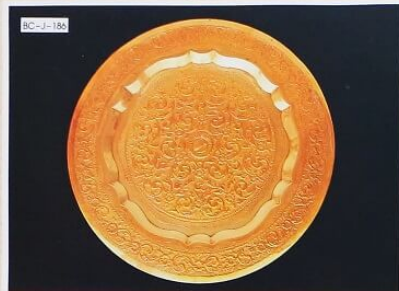


SSIC



180. Brass Plate Square Bull Figure Moenjodaro size 24"  
181. Brass Plate Engraved Black Figure work size 12"  
182. Brass Plate Engraved Black Figure work size 12"  
183. Brass Thali Engraved Black Figure work size 24"  
184. Brass Plate Engraved coloured size 12"  
185. Brass Plate Engraved coloured size 12"

113



BC-J-186



BC-J-188



BC-J-187



BC-J-189

186. Copper Thali  
Embossed size 24"

187. Brass Wall Plate  
Embossed Bull Figure  
(Maenjadaro)  
size 24"

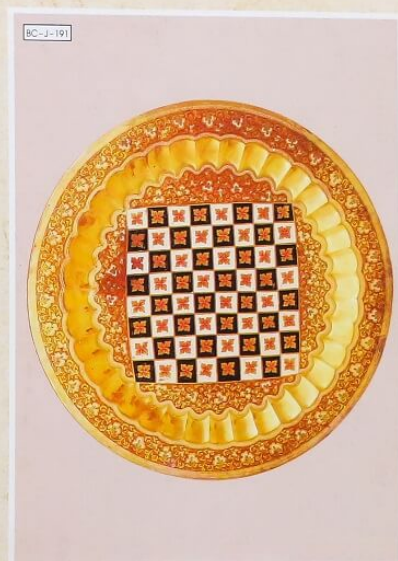
188. Brass Thali  
Embossed Cut Work  
size 24"

189. Brass Thali  
Engraved,  
Coloured Fancy  
size 24"

SSIC



BC-J-190



BC-J-191

190. Brass Thali Embossed cut work size 24"

191. Brass Thali Engraved coloured Fancy size 24"

SSIC

115



GS-J-192



- (1) German Silver Goblet Engraved size 5"  
(2) German Silver Goblet Engraved size 5"  
(3) German Silver Goblet Engraved size 5"  
(4) German Silver Goblet Engraved size 5"  
(5) German Silver Goblet Engraved size 5"  
(6) German Silver Goblet Engraved size 5"  
(7) German Silver Goblet Engraved size 5"  
(8) German Silver Goblet Engraved size 5"  
(9) German Silver Goblet Engraved size 5"

116

SSIC



GS-J-193



GS-J-195

SSIC

GS-J-194



GS-J-196



GS-J-197

193. German silver Jewelry box Embossed size 4" x 5"  
194. German silver Tea Set Engraved  
195. German silver Goblet set (Sherry set) Engraved (net of 7 pcs.)  
196. German silver Ice Pot Engraved  
197. German silver Coffee Pot (Dalla) Embossed size 8"

117



205. German Silver Dish size 23" x 11 1/2".  
 206. German Silver Dish size 14" x 10".  
 207. German Silver Donga size 8".  
 208. German Silver Tray size 11" x 16".  
 209. German Silver Tray size 11" x 8 1/2".  
 210. German Silver Planter Round size 11" dia.  
 211. German Silver Tray size 11" x 8".  
 212. German Silver Aftaba size 16".  
 213. Copper Flower Vase size 20".  
 214. Copper Jug size 12".  
 215. Copper Tray Mughal Art Embossed size 21" x 26 1/2".



BC-J-215





216. German Silver Basket size 12" X 9 1/2" X 7". 220. German Silver Oval size 15" X 10 1/2".  
 217. German Silver Basket size 8" round. 221. German Silver Cutlery Set of 93 pcs.  
 218. German Silver Tray round size 15". 222. German Silver Tray round size 15".  
 219. German Silver Kettle size 7 1/2". 223. German Silver Jug size 8".

SSIC



224. Brass Candle Cover with glass size 16".  
 225. Brass Candle Cover with glass size 13 1/2".  
 226. Brass Candle Cover with glass size 8".  
 227. Brass Candle Cover with glass size 17".  
 228. Brass Candle Cover with glass size 10".  
 229. Brass Candle Cover with glass size 17".

SSIC

230. Copper Flower Vase Embossed size 14 1/2"  
231. Copper Flower Vase Embossed size 13"  
232. Copper Flower Vase Embossed size 18"  
233. Copper Flower Vase Embossed size 18"

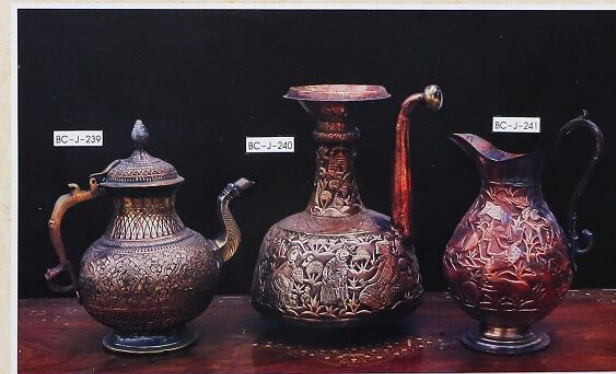


122

SSIC



234. Copper / Brass Leaf  
Light Cut Work size 16" X 12".  
235. Copper / Brass  
Light Cut Work size 17".  
236. Copper / Brass  
Light Cut Work size 14" X 10".  
237. Copper Bada Embossed  
size 11".  
238. Copper Planter Embossed  
size 5 1/2".  
239. Copper Lota Embossed  
size 12".  
240. Copper Surahi Embossed  
size 11".  
241. Copper Jug Embossed  
size 10".



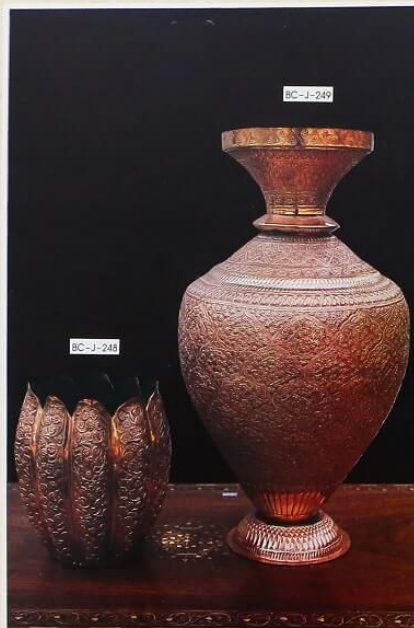
123

SSIC





- |   |  |
|---|--|
| 242. Copper Samovar Embossed size 16".          | 246. Copper Deigh Engraved with handle round size 15" X 14". |
| 243. Copper Surahi Jug Engraved size 17".       |  |
| 244. Copper Samovar Engraved size 17".          | 247. Copper Surahi Flower Vase Engraved size 16".            |
| 245. Copper Handi Engraved size 9" X 14" round. | 248. Copper Flower Vase Embossed size 8".                    |
|   | 249. Copper Flower Vase Embossed size 19".                   |



## COSTUME JEWELLERY

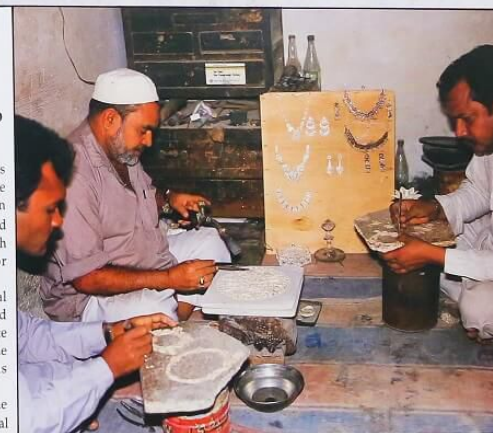
WHITE METAL, (GERMAN SILVER), GLASS BEADS, ONYX BEADS, GLASS BANGLES AND LEATHER JEWELLERY.

The tradition of jewellery in some form or other goes back to the first strings of civilization. It being their divine right, the women in pre-historic days also used to adorn themselves with garlands, girdles, bangles, bracelets and ear-hanging made of fresh natural flowers, or crafted with clay, semi-precious stones, Sea shells, fish Bone or Elephant tusk or made of alloy of metals.

With the advancement of cultural and traditional aesthetics and influenced with discovery of gold and silver, precious stones and diamonds and lately the white metal (German silver an alloy of copper, zinc and tin) the theme of costume jewellery under-went harmonious changes.

White metal for its quality of durability and for fine bright silver-like finish has today become a popular metal for crafting a wide range of costume jewellery with happy blending of traditional and modern fashions.

Finally drawn white metal wire when given shape by skillful fingures of craftsmen to form light weight costume jewellery in a variety of traditional designs and motifs is called filigree work. – Diamond cut technique in white metal has also established a high degree of skill in making costume jewellery of peculiar features and facets. Designs implanted on white metal jewellery are mostly floral or geometrical. Abstract motifs are also employed to conform to modern tastes and trends.



An array of items in white metal costume jewellery is produced by craftsmen with hereditary skill. The range covers necklaces, neck-Band pendants, ear-rings, anklets, wrist-bands, broaches, knot chains, ear-tops, finger rings, lockets, bangles, arm bands and many more.

Crafted by hand the simple, plain or decorated multi-coloured glass bangles are taken by womenfolk as gayful and festive way of adoration. High quality bangles are decorated with liquid gold and silver powder. Such Bangles are equally popular among young girls and grown up women both in rural and urban areas.

Hand crafted colourful glass beads in countless shapes, shades and designs reflect both variety and perfection in form and treatment. Elegantly made glass beaded string necklaces and bracelets are in fancy and fashion for casual wear.

Onyx beaded costume jewellery is a new fashion getting popularity amongst youngsters. String necklaces, ear-rings and ear tops and bracelets make fascinating evening wear.

Leather Jewellery is a craft of recent origin. Prevalent indigenous talents introduced technique of producing ornamentation items with leather intermixed with aesthetic harmony of shining brass or enodized aluminium fittings and decorations. Leather Jewellery has its own peculiar features and facets. Designs and shapes of the components of leather jewellery are mostly modern conforming to tastes and trends of the young generation. Brown, light brown, black, red and blue shades of leather are used to produce a variety of necklaces, bracelets, Bangles, Ear-rings and Ear tops, Finger Rings etc.



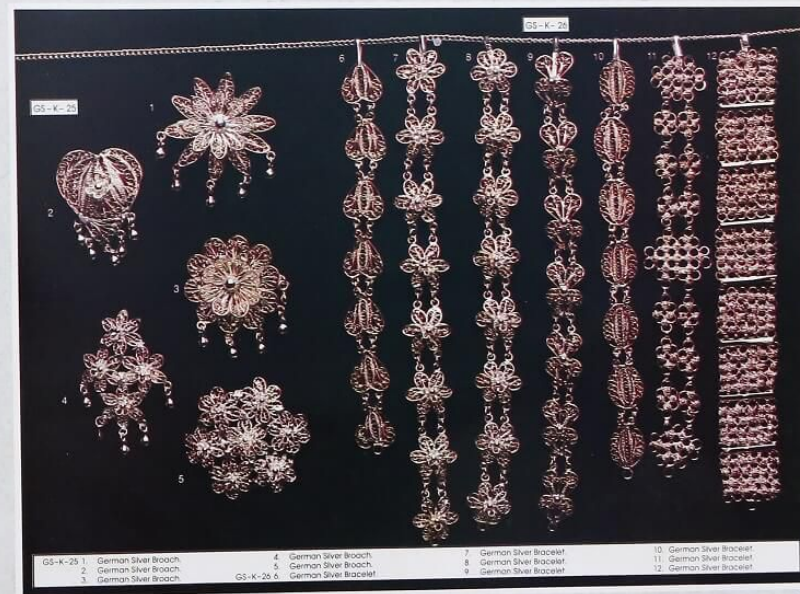
SSIC



SSIC











27. (1, 2, 3, 4, 5, 6) German Silver bangle (KABA)  
 28. (7, 8, 9) German Silver Anklets (PAZERB)  
 29. (1, 2, 3, 4, 5, 6, 7, 8, 9, 10, 11, 12) German Silver Earring  
 30. (1, 2, 3) German Silver Sindh traditional Necklace  
 31. German Silver Ear-Ring  
 32. German Silver Sindh traditional (Gubana)  
 33. German Silver bangle with stone  
 34. (1, 2) German Silver bangle  
 35. (1, 2, 3, 4, 5, 6, 7, 8, 9, 10, 11, 12) German Silver Earring

132



SSIC



36. (1, 2, 3, 4, 5, 6, 7, 8, 9, 10) German Silver Necklace

SSIC

133





134

SSIC



SSIC

135





Grass Bangle Kara set From 1 to 40 Sizes from  $1\frac{1}{2}$ " x  $1\frac{1}{2}$ " - 2" x  $2\frac{1}{2}$ " - 2" x  $2\frac{1}{2}$ ". Baby sizes also available

136

SSIC



Plastic Bangle Kara set Meena Work From 1 to 44 Sizes from  $1\frac{1}{2}$ " x  $1\frac{1}{2}$ " - 2" x  $2\frac{1}{2}$ " - 2" x  $2\frac{1}{2}$ ". Baby sizes also available

SSIC

137



- |                   |                      |                      |
|-------------------|----------------------|----------------------|
| 1. Leather Brooch | 8. Leather Brooch    | 15. Leather Hair Pin |
| 2. Leather Brooch | 9. Leather Brooch    | 1. Leather Ear-ring  |
| 3. Leather Brooch | 10. Leather Hair Pin | 2. Leather Ear-ring  |
| 4. Leather Brooch | 11. Leather Hair Pin | 3. Leather Ear-ring  |
| 5. Leather Brooch | 12. Leather Hair Pin | 4. Leather Ear-ring  |
| 6. Leather Brooch | 13. Leather Hair Pin | 5. Leather Ear-ring  |
| 7. Leather Brooch | 14. Leather Hair Pin | 6. Leather Ear-ring  |



- |                         |                     |                      |
|-------------------------|---------------------|----------------------|
| 4. Leather Necklace set | 8. Leather Necklace | 7. Leather Bracelet  |
| 2. Leather Necklace set | 1. Leather Bangle   | 8. Leather Bracelet  |
| 3. Leather Necklace set | 2. Leather Bangle   | 9. Leather Bracelet  |
| 5. Leather Necklace     | 3. Leather Bangle   | 10. Leather Bracelet |
| 4. Leather Necklace     | 4. Leather Bangle   | 11. Leather Bracelet |
| 6. Leather Necklace     | 5. Leather Bangle   | 12. Leather Bracelet |
| 7. Leather Necklace     | 6. Leather Bangle   | 13. Leather Bracelet |
|                         |                     | 14. Leather Ponytail |





1. (1, 2, 3, 4, 5, 6, 7, 8) Glass Bead Necklace with Bracelet
2. (1, 2, 3, 4, 5, 6, 7, 8, 9, 10, 11, 12) Glass Bead Necklaces
3.
  1. Onyx Bead Necklaces
  2. Onyx Bead Necklaces
  3. Onyx Bead Necklaces
  4. Onyx Bead Necklaces
  5. Onyx Bead Necklaces
  6. Onyx Bangles
  7. Onyx Bead Necklaces
  8. Onyx Bead Necklaces
4. Onyx Bead Necklaces
5. Onyx Bead Shuffled Bracelet
6. Onyx Bead Shuffled Bracelet
7. Onyx Bead Shuffled Bracelet
8. Onyx Bead Shuffled Bracelet
9. Onyx Bead Shuffled Bracelet



## LEATHER GOODS AND FOOTWEAR

Pakistan produces a variety of tanned leather of high quality in various shades by processing cow and calf hides, goat and sheep skin and also the valuable snake skin all suitable for manufacture of a wide range of utility items in product groups of leather goods, apparels and footwear.

The technique of decorating leather crafts with colourful silken and gold and silver metallic threads has also been preserved as a cultural and traditional linkage.

Leather goods namely hand bags, purses, pouches, coin purses, wallets, belts, leather garments and footwear are styled largely for contemporary taste and follow the modern trend in patterns, designs and functionalism.

Light weight Saleem Shahi footwear as the name implies is of Royal Moghal heritage and is featured for comfort. It is beautifully adorned with intricate embroidery in traditional floral patterns with colourful silken threads and also with gold and silver metallic threads.

The Sindhi feminine slipper is distinct for its peculiar narrow sole and broad toe. It is gaily embroidered with metallic threads and silken Pom Poms employing secretive skill.





1. Snake Skin Hand bag.
2. Snake Skin Hand bag.
3. Snake Skin Ladies Shoes.
4. Snake Skin Ladies Shoes.
5. Snake Skin evening Bag patch work size 9 1/2" X 5".
6. Snake Skin evening Bag patch work size 9 1/2" X 5".
7. Snake Skin evening Bag patch work size 9 1/2" X 5".
8. Snake Skin evening Bag patch work size 9 1/2" X 5".
9. Snake Skin Ladies Hand Bag size 10 1/2" X 8".
10. Snake Skin evening Bag size 9 1/2" X 5".
11. Snake Skin Hand bag.
12. Snake Skin Hand bag.
13. Snake Skin Hand bag.
14. Snake Skin Hand bag.
15. Snake Skin Hand bag.
16. Snake Skin Wallet.
17. Snake Skin Wallet.
18. Snake Skin Wallet.
19. Snake Skin Wallet.
20. Leather Hand bag.
21. Leather Hand bag.
22. Leather Hand bag.
23. Leather Hand bag.
24. Leather Hand bag.
25. Leather Hand bag.
26. Leather Hand bag.
27. Leather Hand bag.



28. (1) Leather Ladies Bag size 12 1/2" X 7".
- (2) Leather Ladies Bag size 11 1/2" X 8 1/2".
- (3) Leather Ladies Bag size 10 1/2" X 7".
- (4) Leather Ladies Bag size 9 1/2" X 7".
- (5) Leather Evening Bag size 11" X 5".
- (6) Leather Tote Bag patch work size 9 1/2" X 8".
- (7) Leather Hand Bag size 11 1/2" X 8".
- (8) Leather Hand Bag size 12" X 8 1/2".
- (9) Leather Hand Bag size 12" X 8".
29. Leather Ladies Hand Bag size 12 1/2" X 8".
30. Leather Ladies Hand Bag size 12 1/2" X 8".
31. Snake Skin Hand Bag size 13 1/2" X 8".
32. Leather Go Go Bag size 7" X 4 1/2".
33. Leather Shopping Bag patch work size 15" X 14".
34. Leather Hand Bag size 10" X 12".
35. Leather Pilot Bag size 18" X 8 1/2" X 12 1/2".
36. Leather Bag with tassels with canvas combination size 8 1/2" X 10 1/2".
37. Leather Brief Case size 18" X 13" X 3 1/2".

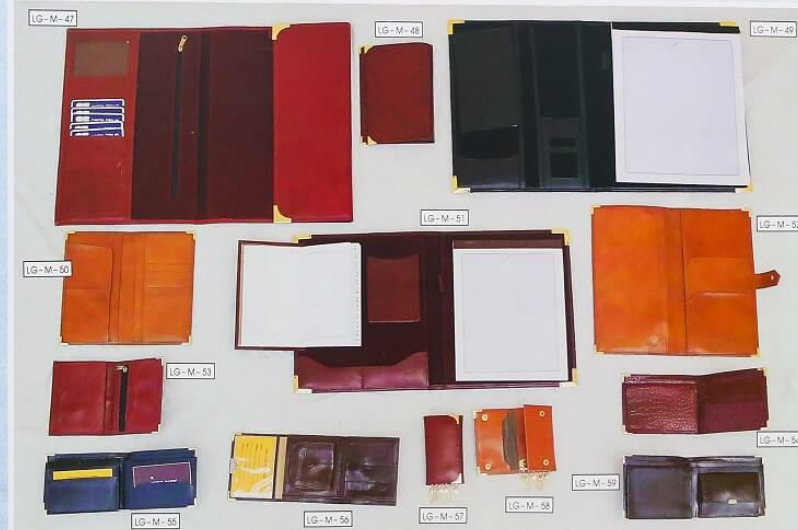




38. (1) Leather Embroidered belt.  
 (2) Leather Embroidered belt.  
 (3) Leather Embroidered belt.  
 (4) Leather Embroidered Keychain Holder.  
 (5) Leather Embroidered belt.  
 39. Leather Embroidered Hand Bag size 8 1/2" X 6".  
 40. Leather Embroidered Optical Cover.  
 41. Leather Embroidered Wallet.  
 42. Leather Embroidered Portfolio size 18" X 13".  
 43. Leather Embroidered Hand Bag size 10" X 8 1/2".  
 44. Leather Embroidered Evening Bag size 10 1/2" X 6".  
 45. (1) to (7) Leather Wallet.  
 46. (1) Leather Case. (2) Leather Pen Case.  
 (3) Leather Documents Wallet.  
 (4) Leather Optical Case. (5) Leather Pouch.  
 (6) Leather Coin Purse.  
 (7) Leather Coin Purse.  
 (8) Leather Key Purse. (9) Leather Folder.

144

SSIC



47. Leather Folder Wallet.  
 48. Leather Writing Pad size 9 1/2" X 5 1/2".  
 49. Leather Folder size A - 3.  
 50. Leather Coat Wallet.  
 51. Leather Paper Folder size A - 4.  
 52. Leather Passport & Ticket Cover size 6 1/2" X 10 1/2".  
 53. Leather Wallet.  
 54. Leather Wallet.  
 55. Leather Wallet.  
 56. Leather Wallet 3 Folder.  
 57. Leather Key Purse.  
 58. Leather Key Purse.  
 59. Leather Wallet size 9 1/2" X 3 1/2".

145

SSIC



- |   |   |                                  |                              |
|---|---|----------------------------------|------------------------------|
| 60. Leather Photo Frame size 4 1/2" X 3 1/2"  | 64. Leather Hand Pouch 9" X 6"                        | 68. Leather Pencil Case          | (4). Leather Belt            |
| 61. Leather Double Photo Frame size 4" X 6"   | 65. Leather Belt Pouch size 9" X 5 1/2"               | 69. (1). Leather reversible Belt | (5). Leather Belt reversible |
| 62. Leather Photo Frame size 4 1/2" X 6"      | 66. Leather Bag size 9" X 5 1/2"                      | (2). Leather Plain Belt          | (6). Leather Belt embossed   |
| 63. Leather Knitted Evening Bag size 10" X 6" | 67. Leather Hand Plus Shoulder Pouch size 9" X 6 1/2" | (3). Leather reversible Belt     | (7). Leather Belt reversible |

146

SSIC



- |  |  |
|--|--|
| 70. Leather Jacket Bag design (Ship Skin) Padded | 75. Leather Jacket of fashion simple                           |
| 71. Leather Jacket Sleeveless                    | 76. Leather Jacket Fleece Goat Skin Swade                      |
| 72. Leather Jacket of fashion uni sex            | 77. Leather Ladies Waist Coat                                  |
| 73. Leather Jacket uni sex                       | 78. Leather Jacket Cow Boy design Goat Skin Swade with Fringes |
| 74. Leather Jacket Sleeveless                    |  |

147

SSIC



LG-M-79



LG-M-80



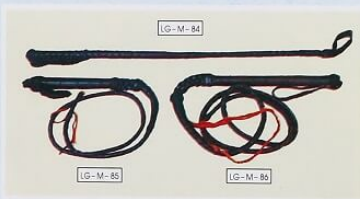
LG-M-81



LG-M-83

LG-M-82

LG-M-84



LG-M-85

LG-M-86

79. Leather Jacket Embossed (Sheep Skin).  
80. Leather Jacket for all seasons.  
81. Leather Jacket for children.  
82. Leather Jacket Uni sex.  
83. Leather Jacket with Combination.  
84. Leather Stick.  
85. Leather Whips 6 to 20.  
86. Leather Whips 8.

SSIC

LG-M-87



87. (1) Leather Slips Traditional Slipper.  
(2) Leather Slips Traditional Slipper.  
(3) Leather Slips Traditional Slipper.  
(4) Leather Slips Traditional Slipper.  
88. (1) Leather Shoes Upper & sole pure leather.  
(2) Leather Shoes Upper leather & sole rubber.

- (3) Leather Shoes (good for all dresses).  
(4) Leather Shoes (good for all dresses).  
(5) Leather Shoes (good for all dresses).  
89. (1) Leather Embroidered Chappal.  
(2) Leather Embroidered Ladies Chappal.

SSIC

LG-M-88



LG-M-89



149



90. (1 to 6) Leather Traditional Foot wear Embroidered.
91. (1) Leather Traditional Wear Plain.  
(2 to 5) Leather Traditional Foot wear Embroidered.
92. (1 to 6) Leather Traditional Foot wear Embroidered.
93. (1 to 5) Leather Traditional Foot wear Embroidered.



## COSTUME DOLLS

From age to age, people to people and from hand to hand, the art of doll making as a craft has survived and flourished towards perfection. Today, the intimate relationship between artistic impulse and culture and raw material is more than evident in the form and tradition of costume dolls.

The village folk have preserved the ancient medium of rag dolls. The rag dolls made by village women in their homes are primitive as well as exotic. String nodding dolls shown in puppet shows are also very popular with the children.

Besides folk crafting of rag dolls, the costume doll making has now been adopted commercially. Body of a costume doll is shaped with steel wire and stuffed with cotton and the face moulded and facial features produced through technique of cosmetics. The clothes and apparels reflect National and regional peculiarities of cultural and traditional values. The costume dolls are also profusely adorned with miniatures of traditional jewellery particularly the bride-dolls.







152

SSIC



SSIC

153



11. Costume Doll sitting
12. Costume Doll sitting
13. Costume Doll sitting
14. Costume Dolls 18"
15. Costume Doll sitting small



154

SSIC

## WOOD CRAFTS

CARVED, EMBOSSED AND CUT WORK,  
BRASS INLAID AND LACQUERED WOOD  
DECORATIVE AND FUNCTIONAL ARTICLES

A VAST array of intricately hand carved, cut and embossed and skillfully brass inlaid and ingeniously lacquered articles both decorative and functional are produced with fine standard of hereditary craftsmanship in the sector of wood crafts. Of them popular are centre tables side tables, nest of table sets, sofa sets, chest of drawers, cigarette boxes, jewellery boxes, dry fruit bowls, salad bowls, trays, partition screens, wall plaques, mugs, egg cups, spoon and forks, chess boards, book ends, vases, jars, candle stands, folk toy etc.

The woods include Shisham, walnut and Bhan. Modern shapes and styles embellished and ornamented with luster of traditional designs and motifs afford the articles the trends of functionalism and traditionalism and also the flexibility of being fit into contemporary way of life.

Dark tone of Shesham wood provides a vivid contrast to brass inlay work ornamentation on to crafts. Multi coloured and traditionally ornamented lacquered wood furniture and crafts carry their own aesthetic values in cultural set up of Sindh. Embellished with floral carving, embossing or cut work, the walnut articles make a cosy and fascinating combination with the style of modern way of life.



155

SSIC





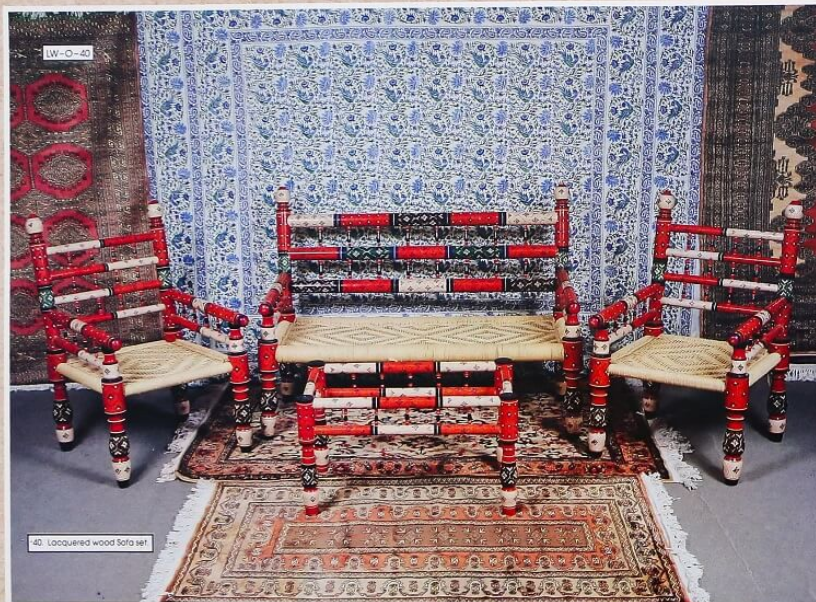
1. Lacquered wood Lamp Base 7"
2. Lacquered wood Lamp Base 11 1/2"
3. Lacquered wood Lamp Base 18"
4. Lacquered wood Lamp 12"
5. Lacquered wood Pot 6"
6. Lacquered wood Flower vase 9"
7. Lacquered wood Flower vase 8 1/2"
8. Lacquered wood Flower vase 5 1/2"
9. Lacquered wood Flower vase 10"
10. Lacquered wood Flower vase 6 1/2"
11. Lacquered wood Flower vase 8"
12. Lacquered wood Flower vase 5"
13. Lacquered wood Dry Fruit Pot with stand 12"
14. Lacquered wood Candle stand 6"
15. Lacquered wood Flower vase 5"
16. Lacquered wood Bowl with stand 3" X 3"
17. Lacquered wood Egg stand 2"
18. Lacquered wood Dry Fruit Bowl with lid
19. Lacquered wood Bowl 3"
20. Lacquered wood Fruit Bowl set 8"
21. Lacquered wood Agar-Batti stand 4"
22. Lacquered wood Bowl 7" Dia



23. Lacquered wood Candle stand 3 Rr 16"
24. Lacquered wood Candle stand 5"
25. Lacquered wood Candle stand 8"
26. Lacquered wood Candle stand 9"
27. Lacquered wood Candle stand 3 1/2" 3 1/2"
28. Lacquered wood Candle stand 8 1/2"
29. Lacquered wood Candle stand 7"
30. Lacquered wood Cigarette Box 4"
31. Lacquered wood Flower vase 10"
32. Lacquered wood Flower vase 10"
33. Lacquered wood Flower vase 10"
34. Lacquered wood Flower vase 10"
35. Lacquered wood Powder Box 8"
36. Lacquered wood Powder Box 10"
37. Lacquered wood Powder Box 6"
38. Lacquered wood Powder Box 4"
39. Lacquered wood Powder Box 4"







158

SSIC



1. Wooden Six Legs Stand  
(carved out of one piece of wood)  
size available 18" - 24" - 30"
2. Wooden Six Legs Stand  
(carved out of one piece of wood)  
size available 24" - 30"
3. Wooden Bowl carved & cut work  
size 10" Dia
4. Wooden Four Legs Stand  
(carved out, one piece of wood)  
size available 12" - 14" - 18" - 24"
5. Wooden Bowl carved and cut work  
size available 8" - 10" - 12" - 14" - 16" Dia
6. Wooden Five Legs Stand  
(carved out one piece of wood) 24"  
size available 12" - 14" - 18"
7. Wooden Four Legs Stand  
(carved out one piece of wood)  
size 12"



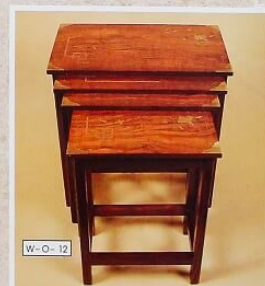
SSIC

159

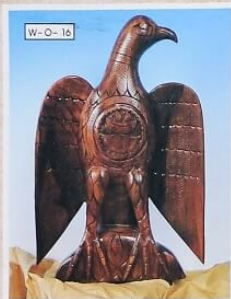




- 8. Wooden Twelve Leg Stand (carved out of one piece of wood) sizes available 24" - 30".
- 9. Wooden Magazine Rack Brass inlaid size 21" X 6".
- 10. Wooden Nest Table set cut work and brass inlaid size 21" X 13".
- 11. Wooden Nest Table set plastic inlaid size 21" X 13".
- 12. Wooden Nest Table set brass inlaid size 21" X 13".



- 13. Wooden Cassette Rack Brass inlaid also for capacity of 96 Cassettes Capacity 72 - 48 - 30 Cassettes.
- 14. Magazine Rack Covered & Brass inlaid size 20" X 20".
- 15. Wooden Ten Leg Stand (carved out of one piece of wood) size 24".



W-O-16

- 16. Wooden Eagle carved  
size available 12"-14"-16"-18".
- 17. Wooden Shark carved  
with stand size 12".
- 18. Wooden Clock carved  
size available 8"-10"-12" dia.
- 19. Wooden Desk Calendar  
Plastic Inlaid 4" x 8".
- 20. Wooden Flower vase carved  
size 10".
- 21. Wooden Flower vase carved  
size 12".
- 22. Wooden Flower vase carved  
size 12".
- 23. Wooden Elephant  
Plastic Inlaid size 6".
- 24. Wooden Elephant  
Plastic Inlaid size available  
8"-10"-12"-14"-16".



W-O-20

W-O-21

W-O-22



W-O-17

W-O-18

W-O-19



W-O-24

W-O-23



W-O-25

W-O-26



W-O-28



W-O-27



W-O-29

- 25. Wooden Donkey Cart,  
size available 20" x 42" - 48" x 22".
- 26. Wooden Horse size 12".
- 27. Wooden Table carved,  
cut work Brass Inlaid  
size available 12" x 18" - 20" x 42".
- 28. Wooden Table carved, & Brass Inlaid  
size available 20" x 42" - 48" x 22".
- 29. Wooden Table Brass Inlaid oval  
size available 12" x 18" - 18" x 36".
- 30. Wooden Table Brass Inlaid oval  
size available 20" x 42" - 22" x 48".





30. Wooden Table Plastic Inlay round size available 12" - 14" - 16" - 18" - 20"
31. Wooden Table Plastic Inlay Octagonal size 16"
32. Wooden Table Plastic Inlay Octagonal size available 14" - 16" - 18" - 24"
33. Wooden Table Plastic Inlay sizes available 20" X 14" - 18" X 36" 42" X 21"
34. Wooden Table Carved & Brass Inlay size 24" X 14" - 36" X 18" - 42" X 21"
35. Wooden Trolley Carved & Brass Inlay size 27" X 14"



36. Wooden Trolley cut work and Brass Inlay sizes 30" X 15"
37. Wooden Fruit Bowl set Plain set of 7 pcs
38. Wooden Cake Stand Plain also available in carving 18"
39. Wooden Fruit Bowl Brass Inlay set of 4 pcs 9"
- 40.
1. Wooden Serving Tray Brass Inlay size 12" X 14"
2. Wooden Serving Tray Brass Inlay size available 12" X 20" 10" X 15"
3. Wooden Ashtray Brass Inlay size 4"
4. Wooden Powder Box Brass Inlay size 4"
5. Wooden Ashtray Brass Inlay size 4"
6. Wooden Powder Box Brass Inlay size 5"
7. Wooden Powder Box Brass Inlay size 5"
8. Wooden Powder Box Brass Inlay size 5"
41. Wooden Tray carved 10" X 15"
42. Wooden Dry Fruit set Plain set of 7 pcs





43. (1) Wooden Plaque cut work Arabic verse No. 1 size 12" (2) Wooden Plaque cut work Arabic verse No. 2 size 10" (3) Wooden Plaque cut work Arabic verse No. 3 size 12" X 3" (4) Wooden Plaque cut work Arabic verse No. 4 size 8" X 6"
- (5) Wooden Plaque cut work Arabic verse No. 5 size 6" X 13"
44. Wooden Rehal carved size 15"
45. Wooden Rehal carved size 15"
46. Wooden Quran Box 15"



47. Wooden Loban-Dan Brass Nail Studded size 10" - 12" - 14"
48. Wooden Loban-Dan Brass Nail Studded size 12"
49. Wooden Loban-Dan Brass Nail Studded size 7"
50. Wooden Loban-Dan Brass Nail Studded size 5"
51. Wooden Tasse Box Plastic Inlaid 6" X 10"
52. Wooden Tasse Box carved 6" X 10"
53. Wooden Box carved 5" X 8"
54. Wooden Box carved 8" X 9"
55. Wooden Loban-Dan Brass Nail Studded 36" size available 12" - 14" - 18" - 30" - 48"







- 56. Wooden Musical Instrument set for decoration.
- 57. Wooden Pencil jar Brass inlaid size 4".
- 58. Wooden Ashtray with Aluminium lining size 5".
- 59. Wooden Cigarette Box. Brass inlaid size 4" X 7".
- 60. Wooden Saddle (stool) Brass inlaid leather / artificial leather cushion.
- 61. Wooden Camel Saddle standard size leather cushion.



168

SSIC



W-O-62

- 62. Wooden Chest of Drawers carved & Brass inlaid size 12" X 18".
- 63. Wooden Box with three Drawers inlaid & Brass Nail studded size 17" X 30".
- 64. Wooden Jewellery Box Plastic inlaid velvet lining size 7" X 10".
- 65. Wooden Jewellery Box Plastic inlaid velvet lining size 8" X 12".
- 66. Wooden Jewellery Box Brass inlaid round top size 15" X 10".



W-O-64

W-O-65



W-O-63



W-O-66

169

SSIC



W-O-67

W-O-68



W-O-70

67. Wooden Jewellery Box Brass Inlaid  
round top size 7" X 10"

68. Wooden Jewellery Box Brass Inlaid  
size 7" X 10"

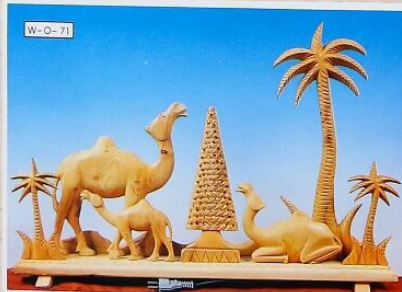
69. Wooden Captain Box carved Brass Inlaid  
size 24"

70. Wooden Box Brass Inlaid size 12" X 18"

71. Wooden Lamp Base with camels and trees



W-O-69



W-O-71

SSIC

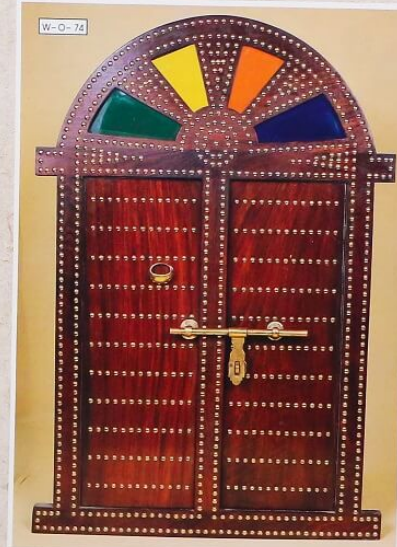


W-O-72



W-O-73

SSIC



W-O-74

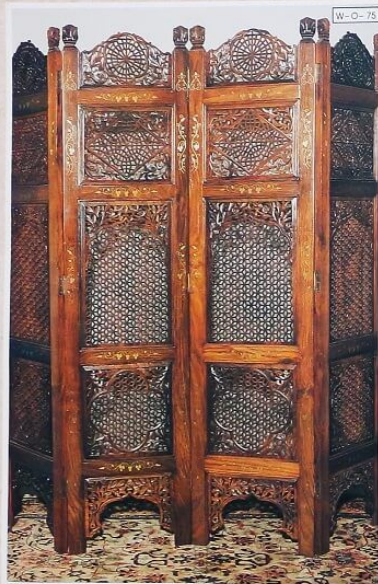
72. Wooden Boat size 35"

73. Wooden Boat size 18"

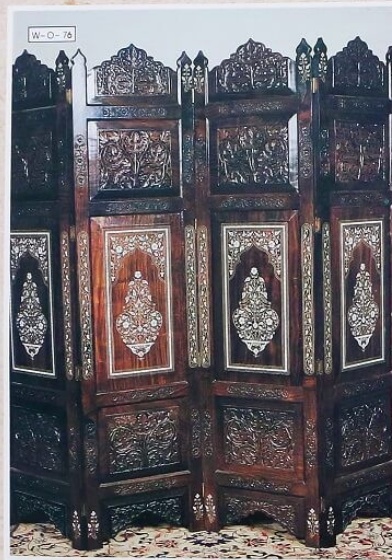
74. Wooden Door Brass Nail studded size 36"

171





W-O-75



W-O-76

75. Wooden Screen cut work, Brass Inlay size 6' X 6'  
76. Wooden Screen carved Plastic Inlay size 6' X 6'

172

SSIC



W-O-77

W-O-79

W-O-78

SSIC



W-O-80

77. Wooden Fork & Spoon carved size 18"  
78. Wooden Fork & Spoon carved also sizes available 12" - 15" - 18" - 20" 24" - 30" - 36"  
79. Wooden walking Stick carved size 36"  
80. Wooden Rocking Chair Brass Inlay full size

81. Wooden Chess Board Plastic Inlay and Chess MEN sizes available 12" - 14" - 16"



W-O-81

173

82. Wooden Candle stand size 13"  
83. Wooden Lamp Base size 14"



174

SSIC

W-O-84



W-O-86

SSIC

W-O-85



84. Wooden writing bureau Brass inlay & carved size 36"  
85. Wooden Chest of Drawers Carved front round size 25" X 15" X 46"  
86. Wooden console cabinet carved size 33" X 33" X 12"

175



W-O-87



87. Wooden three Games Table chess, back gammon & bridge size 30" X 30" brass inlay.  
 88. Wooden Nest of Table set of 3 pcs. U/O design size 21" X 18" X 14" brass inlay.  
 89. Wooden Chest of Drawers brass inlay size 35" X 16" X 33".

176

W-O-88



W-O-89



SSIC

W-O-90



90. Wooden chest of drawers brass inlay size 44" X 24" X 14".  
 91. Wooden Bar Cabinet carved size 36" X 47" X 20".  
 92. Wooden Writing Bureau roll top desk brass inlay size 45" X 36" X 20".

SSIC

W-O-91



W-O-92



177



- 93. Wooden China round stool brass inlay size 16" X 12".
- 94. Wooden Elephant Stool brass inlay size 18" X 20".
- 95. Wooden round revolving cassette rack for 50 cassettes size 17" X 12" brass inlay.
- 96. Wooden Royal Chair Brass inlay size 40".
- 97. Wooden Captain Chest brass inlay size 30" round top.

SSIC

## CAMEL BONE CRAFTS

Crafting of artistic articles from Ivory (Elephant Tusk) is an age old tradition and backed by royal patronage it developed to high esteem for the lovers of Art.

Ivory getting rare these days, the camel bone has been substituted to take place of ivory. Laborious process is involved in curing, cutting and crafting small utility items of costume jewellery and accessories out of camel bone.

DONE with extremely delicate and intricate carving, engraving, embossing and perforating in floral or geometrical designs and patterns with high degree of perfection, the camel bone crafts have today acquired a distinguished place among the hand crafted articles. Designs are generally implanted onto the articles by two modes of execution, floral tracery or lace like perforation.

The hand crafted camel bone items include necklaces, ear-rings, ear tops, bracelets, bangles, finger rings, broaches, caskets, antimony cases, birds and animal figures, caprisons caravans of camels, table lamps, figure sculptures and many more artistic articles.



SSIC

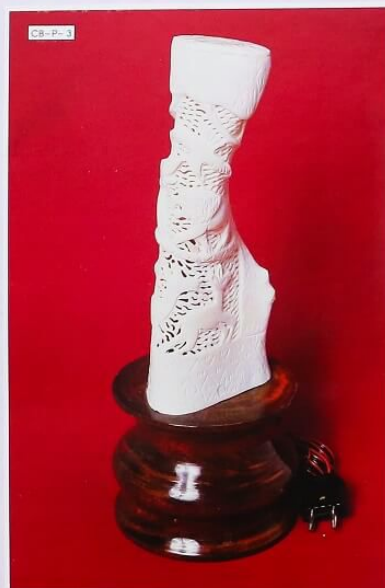
179





1. Camel Bone Lamp, size 12
2. Camel Bone Lamp, size 8
3. Camel Bone Lamp, size 13

180



SSIC



SSIC



4. Camel Bone Elephant, size 4
5. Camel Bone Elephant, size 5
6. Camel Bone Elephant, size 5
7. Camel Bone Elephant, size 6
8. Camel Bone Elephant, size 6
9. Camel Bone Elephant, size 4
10. Camel Bone Elephant, size 3
11. Camel Bone carved Figure, size 7
12. Camel Bone carved Figure, size 4

181

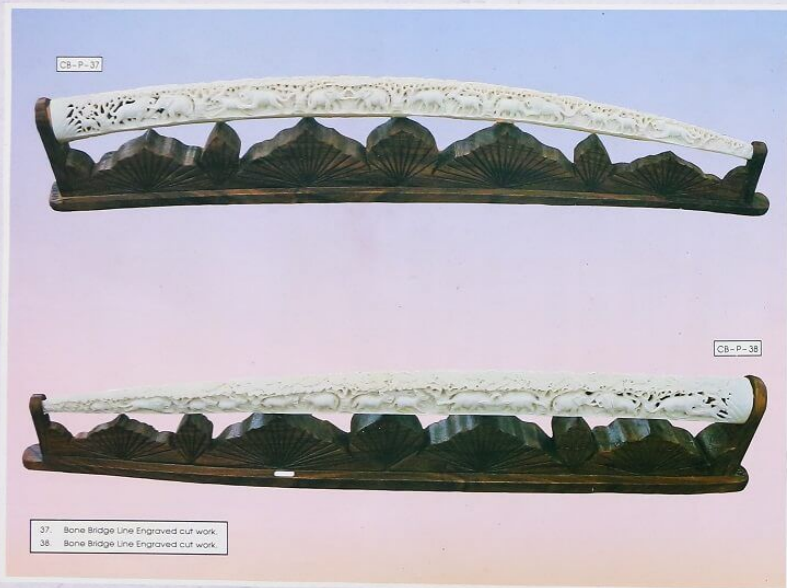


- 13. Bone Candle Stand.
- 14. Camel Bone Lamp 12".
- 15. Camel Bone Candle Stand.
- 16. Camel Bone Necklace.
- 17. Camel Bone Necklace three string.
- 18. Bone & Wooden Beads Necklace.
- 19. Bone Necklace three string.
- 20. Bone Necklace.
- 21. Bone Animal Figure 3".
- 22. Bone Pen Holder.
- 23. Bone Cocktail Pins stand.
- 24. Bone Ball Pen.
- 25. Bone Cocktail Pins (Bunch of 12 pins).
- 26. Bone Necklace.
- 27. Bone Necklace.
- 28. Bone Necklace.
- 29. Bone Necklace.
- 30. Bone Necklace.
- 31. Bone Necklace.



- 32. (1) Bone Paper Cutter.
- 33. Bone Statue Buddha size 3".
- 34. Bone Statue Buddha size 3".
- 35. Bone Statue Buddha size 3".
- 36. Bone Statue Buddha size 3".





37. Bone Bridge Line Engraved cut work.  
38. Bone Bridge Line Engraved cut work.



**SINDH SMALL INDUSTRIES CORPORATION**  
**GOVERNMENT OF SINDH - PAKISTAN**

**PAKISTAN HANDICRAFTS**

P.I.D.C. HOUSE, DR. ZIAUDDIN AHMED ROAD, KARACHI, PAKISTAN.  
TEL : 092-021-99204380 FAX : 092-021-99206691  
E-MAIL : [ssicgos.1972@yahoo.com](mailto:ssicgos.1972@yahoo.com) WEB SITE : [www.ssic.gos.pk](http://www.ssic.gos.pk)

**DIRECTORATE OF MARKETING**

SINDH SMALL INDUSTRIES CORPORATION,  
A. M. 310, PREEDY STREET, SADDAR, KARACHI, PAKISTAN.  
TEL : 092-021-99215582 FAX : 092-021-99215584  
E-MAIL : [ssicgos.1972@yahoo.com](mailto:ssicgos.1972@yahoo.com) WEB SITE : [www.ssic.gos.pk](http://www.ssic.gos.pk)